

Works for Jandorf Pull Chains:

- #60311 – Antique Brass Beaded Chain with Antique Brass Ball
- #60312 – Solid Brass Beaded Chain with Walnut Wooden Ball
- #60314 – Solid Brass Beaded Chain with Solid Brass Ball
- #60315 – Solid Brass Beaded Chain with Brass Teardrop
- #60316 – Solid Brass Beaded Chain with Acrylic Cylinder
- #60318 – Solid Brass Beaded Chain with Walnut Wooden Knob
- #60319 – Solid Brass Beaded Chain with White Wooden Knob
- #60320 – Solid Brass Beaded Chain with Acrylic Sphere
- #60321 – Solid Brass Beaded Chain with Natural Wooden Cylinder
- #60322 – Solid Brass Beaded Chain with Brass & White Ceramic Pull
- #60323 – Pewter Beaded Chain with Brushed Pewter Ball

What's Inside

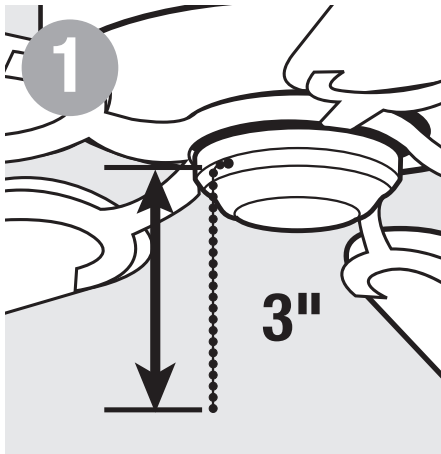
1 – 12" Beaded Chain with Decorative Pull

What's Its Purpose

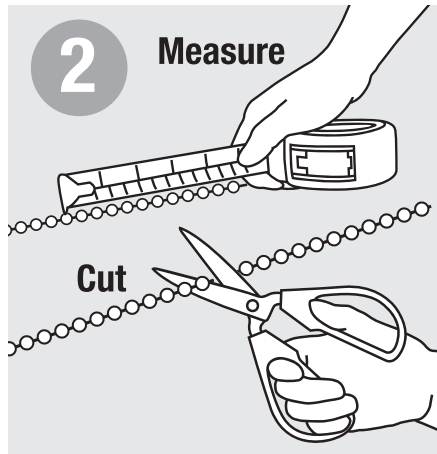
Turning lamp or ceiling fan on and off.

Warning

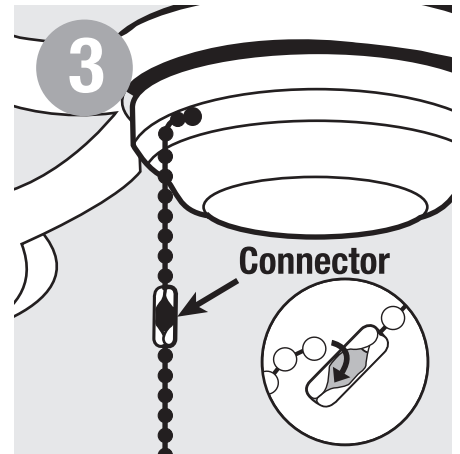
- Before beginning **TURN OFF POWER** to light from fuse or circuit breaker.
- Follow local electrical regulations or codes when installing and using this product.



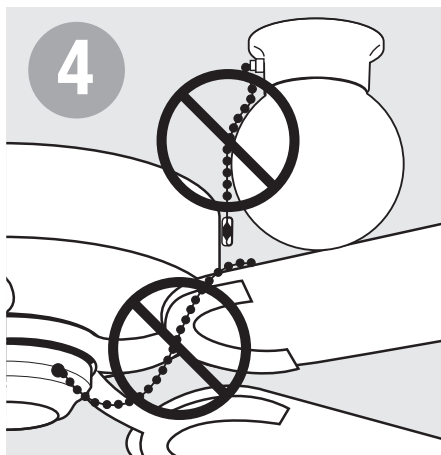
To attach use 3" of existing chain from fixture.



Determine length of new pull chain. Cut or add additional chain.



Snap connector from pull chain over last bead of existing chain.



After installation make sure chain does not rest against lamp or interfere with fan.