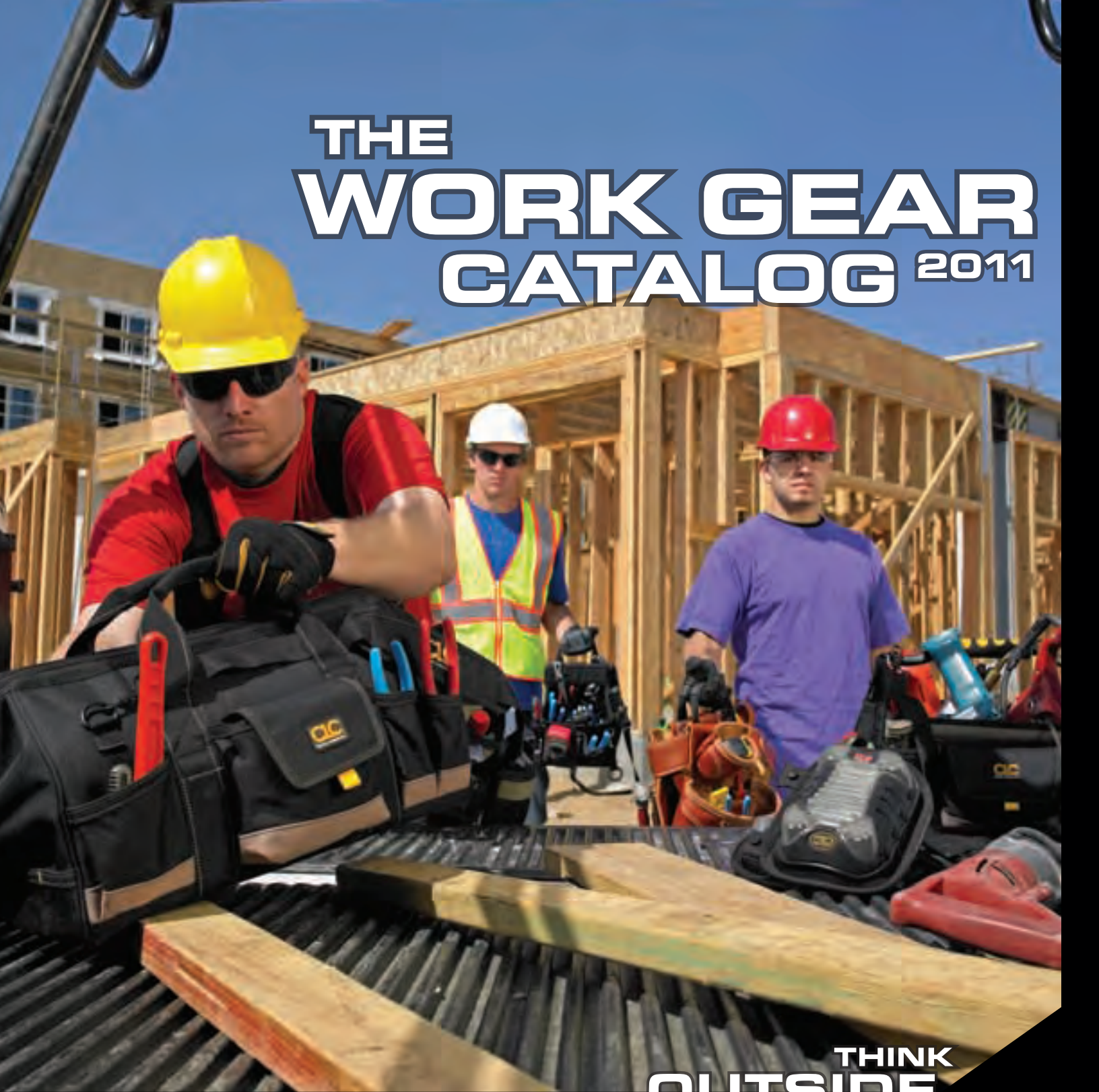


# THE WORK GEAR CATALOG 2011



THINK  
**OUTSIDE**  
THE TOOL BOX™





## UNRIVALED INNOVATION, CRAFTSMANSHIP AND DURABILITY

Welcome to the CLC work gear catalog. Our latest product offering, right here at your fingertips. Inside you'll find the most innovative styles and products on the market. We've added a few new categories and many more new items. Our product designers have worked tirelessly to create classic styles with functional features that fit the needs of even the most discerning tradesman. While our factory craftsmen and women have taken great care in building each item to ensure quality throughout. Not only are our products stylish and functional, they're built tough, too. We've selected the right materials and use proper construction techniques that will give you unrivaled durability. We take great pride in being the leader in the work gear category and work hard to earn that status every day. We're constantly "thinking outside the toolbox." Thank you for choosing Custom LeatherCraft.

**» TABLE OF CONTENTS****CLC SIGNATURE™ 2 - 9**

- › Top Grain Leather 4 - 6
- › Ballistic Nylon 6 - 9

**APRONS AND COMBOS 10 - 19**

- › Ballistic Poly 12 - 15
- › Polyester 15 - 17
- › Leather 18 - 19

**NAIL AND TOOL BAGS 20 - 25**

- › Ballistic Poly 22
- › Polyester 23
- › Leather 23 - 25

**TOOL POUCHES 26 - 31**

- › Ballistic Poly 28
- › Polyester 28 - 29
- › Leather 30 - 31

**TOOL HOLDERS 32 - 39**

- › Polyester 34 - 35
- › Tarpaulin 35
- › Cell Phone 36
- › Keystone™ 37
- › Leather 38 - 39

**SOFTSIDE TOOL CARRIERS 40 - 53**

- › Tool Carriers 42 - 52
- › Bucket Organizers 52 - 53

**KNEEPADS 54 - 61****CLIMATE GEAR™ 62 - 69**

- › Rain Wear 64 - 67
- › Rain Boots 68
- › Tarpaulin 69

**HI-VIZ GEAR™ 70 - 77**

- › Safety Vests 72 - 75
- › Work Gear 76 - 77

**CLC SPORTSMAN™ 78 - 79****BELTS AND SUSPENDERS 80 - 85**

- › Backbelts 82
- › Belts 83 - 84
- › Suspenders 84 - 85

**CANVAS 86 - 91**

- › Aprons 88 - 89
- › Buckets 90 - 91
- › Bags 91

**MERCHANDISERS 92 - 94****INDEX 95 - 97**



# CLC SIGNATURE™

Our Signature line fully embodies our pride of craftsmanship. We use the finest materials and time-tested construction methods to make this classically styled line the best-of-the-best. Ebony ballistic nylon and top grain chestnut leather abound. We've incorporated subtle features that make these belts and rigs very comfortable to wear and even easier to use. The pros know, and this is what they choose.

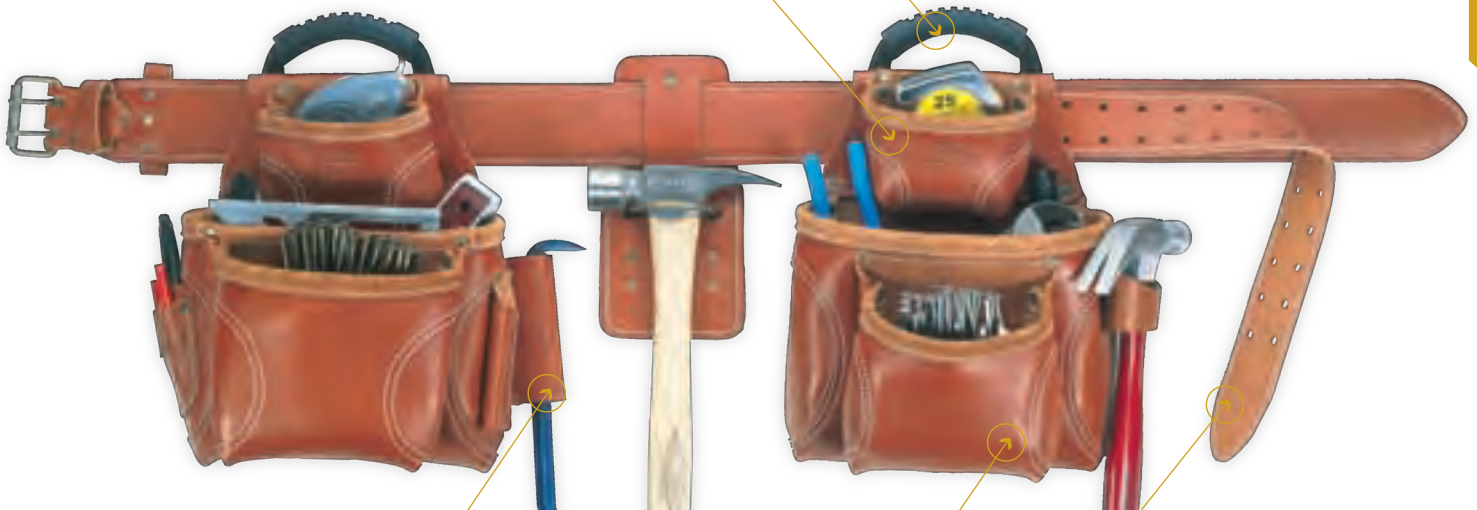


# #21449

## 17 Pocket - 4 Piece Top-of-the-Line Pro-Framer's Combo System

Easy carry handle design provides simple adjustments, easy carrying and storage of combo without spilling contents.

9 Smaller pockets fit pliers, nail sets, pencils, knife, etc.



Leather combination square and pry bar holders.

6 Main reversed nail and tool pockets.

2 3/4" Wide padded heavy leather belt with double tongue steel roller buckle, fits waist sizes 29"- 46".

### » KEY CATEGORY FEATURES



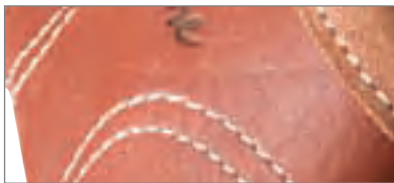
Premium top grain leather for durability and a classic look and feel.



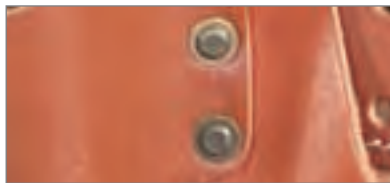
Double-layered 1680D ballistic nylon and top grain leather for strength and durability.



Patented pouch handle design makes carrying and adjusting a breeze.



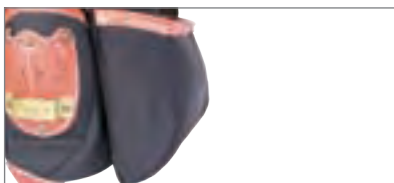
Heavy-duty stitching for strength and durability.



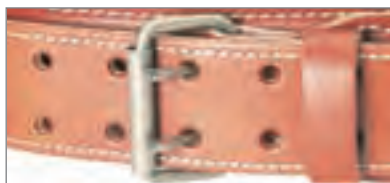
Rivets with double washers at all stress points for added durability.



Padded lift system for better fit and comfort.



Gusset-style pockets provide easy access to nails and fasteners.



Double tongue roller buckle helps keep belt stable and comfortable.

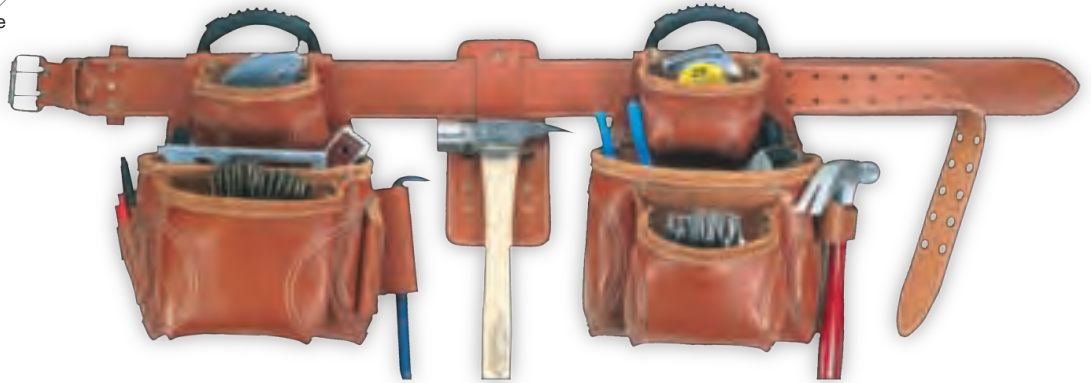


Suede lined leather belt for added stability and comfort.

21449

**17 Pocket - 4 Piece Top-of-the-Line Pro-Framer's Combo System**

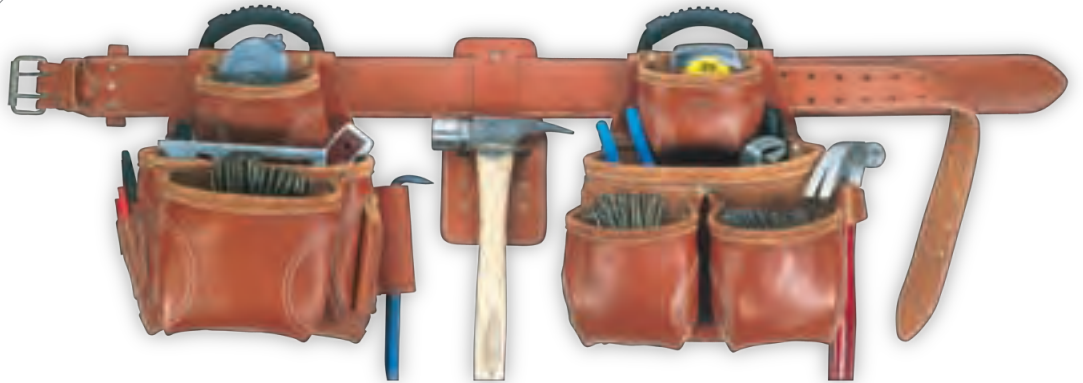
- › Easy carry handle design provides simple adjustments, easy carrying and storage of combo without spilling contents.
- › 6 Main reversed nail and tool pockets.
- › 9 Smaller pockets fit pliers, nail sets, pencils, knife, etc.
- › Leather combination square and pry bar holders.
- › 2¾" Wide padded heavy leather belt with double tongue steel roller buckle.
- › Consists of #21683 & #21425 bags, #21960 belt and #21439 hammer holder.
- › Heavy-duty top grain leather.
- › Fits waist sizes 29"- 46".
- › **21449XL** Fits waist sizes 47"- 55"



21450

**18 Pocket - 4 Piece Top-of-the-Line Pro-Framer's Combo System**

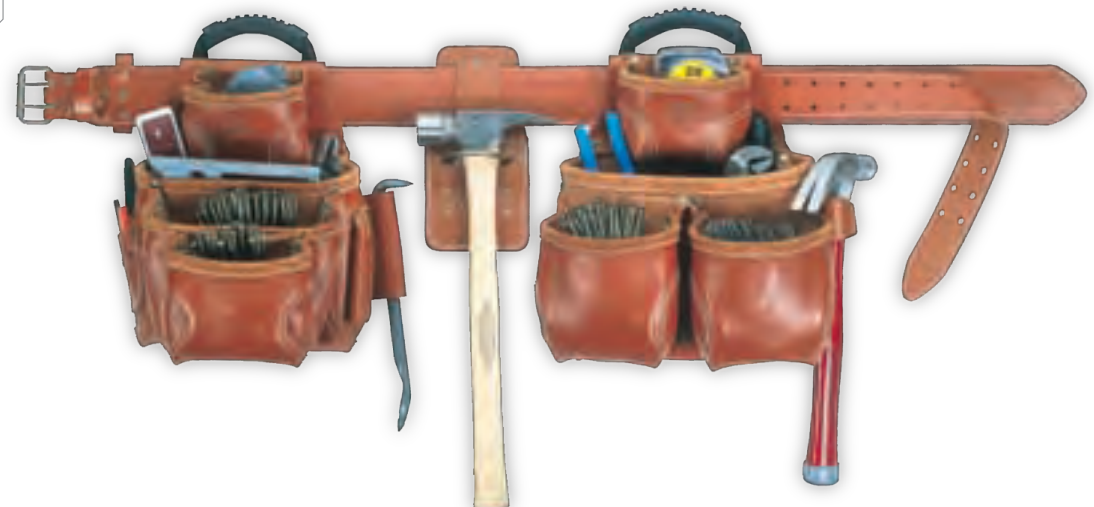
- › Easy carry handle design provides simple adjustments, easy carrying and storage of combo without spilling contents.
- › 7 Main reversed nail and tool pockets.
- › 9 Smaller pockets fit pliers, nail sets, pencils, knife, etc.
- › Leather combination square and pry bar holders.
- › 2¾" Wide padded heavy leather belt with double tongue steel roller buckle.
- › Consists of #21683 & #21426 bags, #21960 belt and #21439 hammer holder.
- › Heavy-duty top grain leather.
- › Fits waist sizes 29"- 46".
- › **21450XL** Fits waist sizes 47"- 55"



21452

**19 Pocket - 4 Piece Top-of-the-Line Pro-Framer's Combo System**

- › Easy carry handle design provides simple adjustments, easy carrying and storage of combo without spilling contents.
- › 8 Main reversed nail and tool pockets.
- › 9 Smaller pockets fit pliers, nail sets, pencils, knife, etc.
- › 2¾" Wide padded heavy leather belt with double tongue steel roller buckle.
- › Consists of #21684 & #21426 bags, #21960 belt and #21439 hammer holder.
- › Heavy-duty top grain leather.
- › Fits waist sizes 29"- 46".
- › **21452XL** Fits waist sizes 47"- 55"



### 17 Pocket - 4 Piece Pro-Framer's Combo System

- › Easy carry handle design provides simple adjustments, easy carrying and storage of combo without spilling contents.
- › 5 Main reversed nail and tool pockets.
- › 9 Smaller pockets fit pliers, nail sets, pencils, knife, etc.
- › Leather combination square and pry bar holders.
- › 2¾" Wide heavy leather belt with double tongue steel roller buckle.
- › Heavy-duty top grain leather.
- › Fits waist sizes 29"- 46".
- › **21448XL** Fits waist sizes 47"- 55"



21683

#### 8 Pocket Nail & Tool Bag

- › Easy carry handle design provides simple adjustments, easy carrying and storage of bag without spilling contents.
- › 3 Main reversed nail and tool pockets.
- › 3 Smaller pockets fit pliers, nail sets, pencils, knife, etc.
- › Leather combination square and pry bar holders.
- › Extra-strength rivets with double washers at key stress points.
- › Heavy-duty top grain leather.



21425

#### 9 Pocket Nail & Tool Bag

- › Easy carry handle design provides simple adjustments, easy carrying and storage of bag without spilling contents.
- › 3 Main reversed nail and tool pockets.
- › 6 Smaller pockets fit pliers, nail sets, pencils, knife, etc.
- › Leather combination square and pry bar holders.
- › Extra-strength rivets with double washers at key stress points.
- › Heavy-duty top grain leather.



21684

#### 9 Pocket Nail & Tool Bag

- › Easy carry handle design provides simple adjustments, easy carrying and storage of bag without spilling contents.
- › 4 Main reversed nail and tool pockets.
- › 3 Smaller pockets fit pliers, nail sets, pencils, knife, etc.
- › Leather combination square and pry bar holders.
- › Extra-strength rivets with double washers at key stress points.
- › Heavy-duty top grain leather.



21426

#### 10 Pocket Nail & Tool Bag

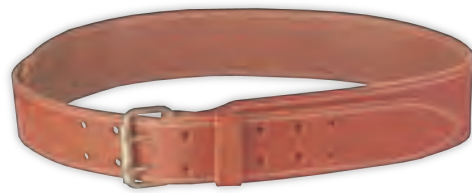
- › Easy carry handle design provides simple adjustments, easy carrying and storage of bag without spilling contents.
- › 4 Main reversed nail and tool pockets.
- › 6 Smaller pockets fit pliers, nail sets, pencils, knife, etc.
- › Leather combination square and pry bar holders.
- › Extra-strength rivets with double washers at key stress points.
- › Heavy-duty top grain leather.



**21960**

**2 3/4" Padded Tapered Leather Work Belt**

- › Padded back panel for support and comfort.
- › Steel double tongue roller buckle.
- › Heavy-duty top grain leather.
- › Fits waist sizes 29"- 46".
- › **21960XL** Fits waist sizes 47"- 55"



**21961**

**2 3/4" Tapered Leather Work Belt**

- › Front cut down design for bending comfort.
- › 2" Double tongue metal roller buckle.
- › Heavy-duty top grain leather.
- › Fits waist sizes 29"- 46".
- › **21961XL** Fits waist sizes 47"- 55"



**21439**

**Heavy Duty Hammer / Hatchet Holder**

- › Extra rear leather for comfort and durable use.
- › Cradle design eliminates hammer pivoting.
- › Fits belts up to 2 3/4" wide.
- › Heavy-duty top grain leather.



**21110**

**Heavy Duty Leather Suspenders**

- › Fully adjustable.
- › Shoulder pads for added comfort.
- › Reduces load of heavy nail bags and aprons.
- › Heavy-duty top grain leather.

**51714**

**26 Pocket - 4 Piece Comfort Lift Framer's Combo System**

- › Crafted from super tough, double layered 1680D ballistic nylon and top grain leather.
- › Completely adjustable, padded suspenders engineered to hold and distribute weight evenly without strain on lower back and hips.
- › Easy carry handle design provides for simple adjustments and easy storage without spilling contents.
- › 5 Main nail and tool pockets.
- › 19 Smaller pockets fit pliers, nail sets, pencils, knife, etc.
- › Leather combination square and pry bar holders.
- › Newly designed Sta-Open main pockets are tapered for faster access to contents.
- › Includes a 3" wide padded comfort belt, with 2" double tongue metal roller buckle.
- › Fits waist sizes 29"- 46".





51609

### 29 Pocket - 4 Piece Comfort Lift Electrical Combo System

- › Crafted from super tough, double layered 1680D ballistic nylon and top grain leather.
- › Completely adjustable, padded suspenders engineered to hold and distribute weight evenly without strain on lower back and hips.
- › Easy carry handle design provides for simple adjustments and easy storage without spilling contents.
- › Zippered top flap pouch to prevent spillage of tools when not in use.
- › Extra padded back for extra comfort.
- › Large screwdriver side holders.
- › Metal hammer holder, tool snap and web strap.
- › Includes a 3" wide padded comfort belt, with 2" double tongue metal roller buckle.
- › Fits waist sizes 29"- 46".



51449

### 25 Pocket - 4 Piece Top-of-the-Line Pro-Framer's Combo System

- › Crafted from super tough, double layered 1680D ballistic nylon and top grain leather.
- › Easy carry handle design provides for simple adjustments and easy storage without spilling contents.
- › 6 Main reversed nail and tool pockets.
- › 17 Smaller pockets fit pliers, nail sets, pencils, knife, etc.
- › Leather combination square and pry bar holders.
- › 5" Wide padded comfort belt with double tongue steel roller buckle.
- › Consists of #51683 & #51425 bags, #51625 belt and #21439 hammer holder.
- › Fits waist sizes 29"- 46".
- › **51449XL** Fits waist sizes 47"- 55"



51450

### 26 Pocket - 4 Piece Top-of-the-Line Pro-Framer's Combo System

- › Crafted from super tough, double layered 1680D ballistic nylon and top grain leather.
- › Easy carry handle design provides for simple adjustments and easy storage without spilling contents.
- › 7 Main reversed nail and tool pockets.
- › 17 Smaller pockets fit pliers, nail sets, pencils, knife, etc.
- › Leather combination square and pry bar holders.
- › 5" Wide padded comfort belt with double tongue steel roller buckle.
- › Consists of #51683 & #51837 bags, #51625 belt and #21439 hammer holder.
- › Fits waist sizes 29"- 46".
- › **51450XL** Fits waist sizes 47"- 55"



## 51451

### 26 Pocket - 4 Piece Top-of-the-Line Pro-Framer's Combo System

- › Crafted from super tough, double layered 1680D ballistic nylon and top grain leather.
- › Easy carry handle design provides simple adjustments, easy carrying and storage of combo without spilling contents.
- › 7 Main reversed nail and tool pockets.
- › 17 Smaller pockets fit pliers, nail sets, pencils, knife, etc.
- › Leather combination square and pry bar holders.
- › 5" Wide padded comfort belt with double tongue steel roller buckle.
- › Consists of #51923 & #51425 bags, #51625 belt and #21439 hammer holder.
- › Fits waist sizes 29"- 46".
- › **51451XL** Fits waist sizes 47"- 55"



## 51452

### 27 Pocket - 4 Piece Top-of-the-Line Pro-Framer's Combo System

- › Crafted from super tough, double layered 1680D ballistic nylon and top grain leather.
- › Easy carry handle design provides simple adjustments, easy carrying and storage of combo without spilling contents.
- › 8 Main reversed nail and tool pockets.
- › 17 Smaller pockets fit pliers, nail sets, pencils, knife, etc.
- › 5" Wide padded comfort belt with double tongue steel roller buckle.
- › Consists of #51923 & #51837 bags, #51625 belt and #21439 hammer holder.
- › Fits waist sizes 29"- 46".
- › **51452XL** Fits waist sizes 47"- 55"



## 51425

### 15 Pocket Nail & Tool Bag

- › Crafted from super tough, double layered 1680D ballistic nylon and top grain leather.
- › Easy carry handle design provides simple adjustments, easy carrying and storage of bag without spilling contents.
- › 3 Main reversed nail and tool pockets.
- › 12 Smaller pockets fit pliers, nail sets, pencils, knife, etc.
- › Steel hammer holder.
- › Extra-strength rivets with washers at key stress points.



## 51683

### 10 Pocket Nail & Tool Bag

- › Crafted from super tough, double layered 1680D ballistic nylon and top grain leather.
- › Easy carry handle design provides simple adjustments, easy carrying and storage of bag without spilling contents.
- › 3 Main reversed nail and tool pockets.
- › 5 Smaller pockets fit pliers, nail sets, pencils, knife, etc.
- › Leather combination square and pry bar holders.
- › Extra-strength rivets with washers at key stress points.



51923

**11 Pocket Nail & Tool Bag**

- › Crafted from super tough, double layered 1680D ballistic nylon and top grain leather.
- › Easy carry handle design provides simple adjustments, easy carrying and storage of bag without spilling contents.
- › 4 Main reversed nail and tool pockets.
- › 5 Smaller pockets fit pliers, nail sets, pencils, knife, etc.
- › Leather combination square and pry bar holders.
- › Extra-strength rivets with washers at key stress points.



51837

**16 Pocket Nail & Tool Bag**

- › Crafted from super tough, double layered 1680D ballistic nylon and top grain leather.
- › Easy carry handle design provides simple adjustments, easy carrying and storage of bag without spilling contents.
- › 4 Main reversed nail and tool pockets.
- › 12 Smaller pockets fit pliers, nail sets, pencils, knife, etc.
- › Steel hammer holder.
- › Extra-strength rivets with washers at key stress points.



51836

**16 Pocket Nail & Tool Bag with Zippered Pocket**

- › Crafted from super tough, double layered 1680D ballistic nylon and top grain leather.
- › Easy carry handle design provides simple adjustments, easy carrying and storage of bag without spilling contents.
- › Steel hammer holder.
- › Zippered Clip Pocket clips to belts, pockets, work aprons for easy repositioning.
- › 3 Main reversed nail and tool pockets.
- › 12 Smaller pockets fit pliers, nail sets, pencils, knife, etc.
- › Extra-strength rivets with washers at key stress points.



51625

**5" Wide Padded Comfort Belt**

- › Crafted from super tough, double layered 1680D ballistic nylon and top grain leather.
- › Foam padding.
- › 2" Double tongue metal roller buckle.
- › Fits waist sizes 29" - 46".
- › **51625XL** Fits waist sizes 47" - 55"



51112

**22" Ballistic Nylon Duffel Bag**

- › Crafted from super tough, double layered 1680D ballistic nylon and top grain leather.
- › Top grain leather carrying handles.
- › Adjustable padded shoulder strap.
- › Ideal carry-on bag when traveling.
- › 22" L x 10" W x 12" H



51114

**16" Ballistic Nylon Briefcase**

- › Crafted from super tough, double layered 1680D ballistic nylon and top grain leather.
- › Top grain leather carrying handles.
- › Adjustable padded shoulder strap.
- › Padded interior walls protect laptop.
- › Multi-use pockets.
- › Easy to reach interior file folder dividers.
- › 16" L x 6" W x 13" H



51115

**Contractor's Business Portfolio**

- › Ballistic nylon with chestnut leather accents.
- › Magnetic clasp.
- › Built-in calculator.
- › Spring clip for 8½" x 11" writing pad.
- › Multiple business card pockets.
- › Pen and document sleeves.



# COMBOS & APRONS

General contractor, carpenter, electrician, construction worker, we make an apron or combo that will fit your need. Packed with features, our tool belts are depended upon by more tradesmen than any other brand. They appreciate CLC quality, value, and features, like our patented pouch handles, our gusset pocket design and a wide variety of pouches, belts and tool holders. We're always thinking about how the job gets done, and we build our belts accordingly.



## 18 Pocket - 5 Piece Professional Carpenter's Combo

Easy carry handle design provides simple adjustments, easy carrying and storage of combo without spilling contents.

9 Main nail and tool pockets.

Metal tape clip holds all measuring tape sizes.

Double layer of rugged, lightweight ballistic poly fabric.

Heavy-duty leather hammer holder.

Smaller pockets for pliers, pencils, nail sets, etc.

5" Wide padded comfort belt with double tongue steel roller buckle, fits waist sizes 29"-46".

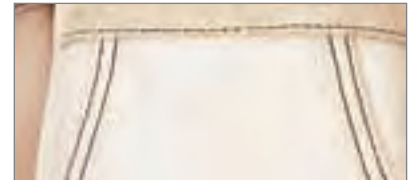
### » KEY CATEGORY FEATURES



Ballistic poly fabric for increased strength and durability.



Polyester fabric and ballistic binding is lightweight but durable.



Heavy-duty top grain leather for strength and durability.



Heavy-duty suede leather provides a soft feel that's ready for work.



One-size-fits-all design is easily adjustable for a tailored fit.



Patented pouch handle design makes carrying and adjusting convenient.



Padded suspender system for better fit and comfort.



Gusset pockets provide easy access to nails and fasteners.



Built-in drill pocket for added convenience.

5605

**18 Pocket - 5 Piece  
Professional Carpenter's Combo**

- › Easy carry handle design provides simple adjustments, easy carrying and storage of apron without spilling contents.
- › Totally versatile - all parts removable and interchangeable.
- › Double layer of rugged, lightweight ballistic poly fabric.
- › Sta-Open feature on main reversed pockets.
- › 5" Wide padded comfort belt with double tongue steel roller buckle.
- › Fits waist sizes 29"- 46"
- › **5605XL** - Fits waist sizes 47"- 55"
- › **11605** - Teal/Black Color
- › **6605** - Navy Blue Color



5604

**15 Pocket - 4 Piece  
Professional Framers' Combo**

- › Easy carry handle design provides simple adjustments, easy carrying and storage of apron without spilling contents.
- › Totally versatile - all parts removable and interchangeable.
- › Double layer of rugged, lightweight ballistic poly fabric.
- › Sta-Open feature on main reversed pockets.
- › 5" Wide padded comfort belt with double tongue steel roller buckle.
- › Fits waist sizes 29"- 46"
- › **5604XL** - Fits waist sizes 47"- 55"



5608

**17 Pocket - 4 Piece  
Carpenter's Combo**

- › Easy carry handle design provides simple adjustments, easy carrying and storage of apron without spilling contents.
- › Totally versatile - all parts removable and interchangeable.
- › Double layer of rugged, lightweight ballistic poly fabric.
- › Sta-Open feature on main reversed pockets.
- › 5" Wide padded comfort belt with double tongue steel roller buckle.
- › Fits waist sizes 29"- 46"
- › **5608XL** - Fits waist sizes 47"- 55"



**20 Pocket - 3 Piece Electrical Combo**

- › Easy carry handle design provides simple adjustments, easy carrying and storage of apron without spilling contents.
- › Totally versatile - all parts removable and interchangeable.
- › Double layer of rugged, lightweight ballistic poly fabric.
- › Metal clip holds all measuring tape sizes.
- › Metal tape chain and tool snap.
- › Pocket to hold cordless drill.
- › 3" Wide padded comfort belt with double tongue steel roller buckle.
- › Fits waist sizes 29" - 46"

**12 Pocket Carpenter's Apron**

- › Double layer of rugged, lightweight ballistic poly fabric.
- › 4 Main pockets for nails/tools.
- › 7 Smaller pockets for pliers, pencils, nail sets, etc.
- › Leather combination square holder.
- › Steel swinging hammer holder.
- › 2" Wide web belt with heavy-duty steel buckle.
- › Fits waist sizes 29" - 46".

**6 Pocket Single-Side Work Apron**

- › Double layer of rugged, lightweight ballistic poly fabric.
- › 2 Main pockets for nails/tools.
- › 4 Smaller pockets for pliers, pencils, nail sets, etc.
- › Metal clip holds all measuring tape sizes.
- › Steel hammer loop.
- › 2" Wide web belt with quick-release buckle.
- › Fits waist sizes 29" - 46".



2605

### 20 Pocket 4-Piece Carpenter's Ballistic Combo

- › Double layer of rugged, lightweight ballistic poly fabric.
- › Easy carry handle design provides simple adjustments, easy carrying and storage of apron without spilling contents.
- › Gussets keep front pockets wide open for greater access.
- › Bottoms of main pockets are reinforced with PVC material for better resistance to abrasion.
- › Built-in utility knife pocket helps prevent accidental pouch punctures.
- › Prybar or combination square holders
- › 5" Wide padded comfort belt with double tongue steel roller buckle.
- › Fits waist sizes 29"- 46".



2602

### 17 Pocket 4-Piece Framer's Ballistic Combo

- › Double layer of rugged, lightweight ballistic poly fabric.
- › Easy carry handle design provides simple adjustments, easy carrying and storage of apron without spilling contents.
- › Gussets keep front pockets wide open for greater access.
- › Bottoms of main pockets are reinforced for better resistance to abrasion.
- › Exclusive metal hook to carry cordless drill, nail gun or other power tools.
- › Built-in utility knife pocket helps prevent accidental pouch punctures.
- › 3" Wide padded comfort belt with double tongue steel roller buckle.
- › Fits waist sizes 29"- 46".



2649

### 11 Pocket 4-Piece Ballistic Combo

- › Double layer of rugged, lightweight ballistic poly fabric.
- › Easy carry handle design provides simple adjustments, easy carrying and storage of apron without spilling contents.
- › 5 Main nail and tool pockets.
- › 6 Smaller pockets for pliers, pencils, nail sets, etc.
- › Built-in utility knife pocket helps prevent accidental pouch punctures.
- › Metal clip holds all measuring tape sizes.
- › 2" Wide padded belt with steel roller buckle.
- › Fits waist sizes 29"- 46".

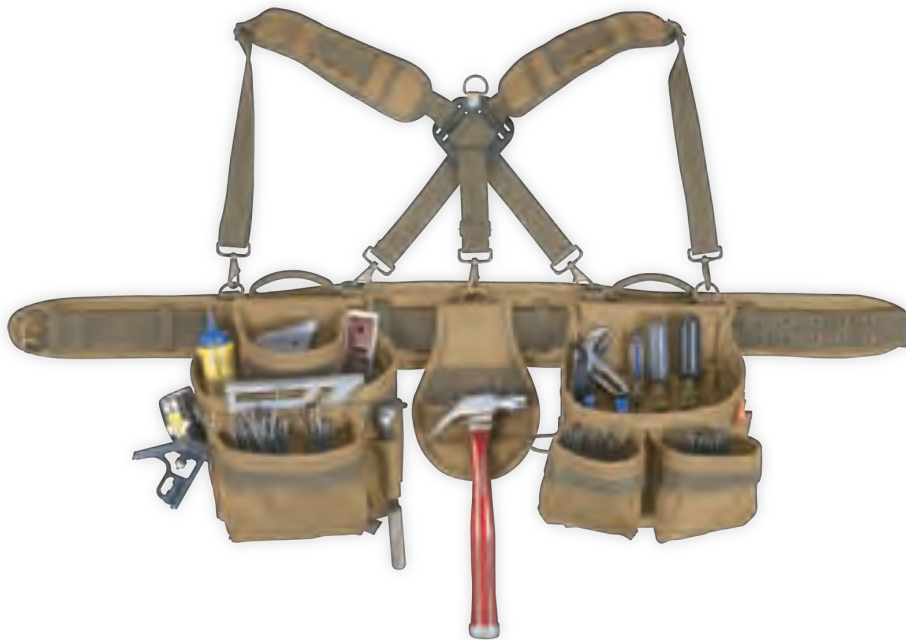




1714

### 22 Pocket - 5 Piece Framer's Comfort Lift Combo System

- › Double layer of rugged, lightweight ballistic poly fabric.
- › Completely adjustable, padded suspenders engineered to hold and distribute weight evenly without strain on lower back and hips.
- › Easy carry handle design provides for simple adjustments and easy storage without spilling contents.
- › Newly designed Sta-Open main pockets are tapered for faster access to contents.
- › Custom pocket for combination square.
- › 5" Wide padded comfort belt with double tongue steel roller buckle.
- › Fits waist sizes 29" - 46".



6714

### 31 Pocket - 5 Piece Heavy-Duty Framer's Comfort Lift System

- › Made of polyester fabric and ballistic binding.
- › Unique, padded suspenders engineered to carry loads comfortably and distribute weight evenly without strain on lower back and hips.
- › Easy carry handle design for simple adjustments and easy storage without spilling contents.
- › New and improved pockets with more capacity and easy access to contents.
- › Metal hook to carry cordless drill, nail guns or other power tools.
- › Cell phone holder on upper part of suspenders for easy access.
- › Bottoms of main pockets are reinforced with PVC material for better resistance to abrasion.
- › 5" Wide padded comfort belt with double tongue steel roller buckle.
- › Fits waist sizes 29" - 46".



1614

### 23 Pocket - 5 Piece Framer's Comfort Lift Combo System

- › Made of polyester fabric and ballistic binding.
- › Completely adjustable, padded suspenders engineered to hold and distribute weight evenly without strain on lower back and hips.
- › Easy carry handle design for simple adjustments and easy storage without spilling contents.
- › Newly designed Sta-Open main pockets are tapered for faster access to contents.
- › Custom pocket for combination square.
- › 2" Wide web belt with double tongue steel roller buckle.
- › Fits waist sizes 29" - 46".



1608

**29 Pocket - 4 Piece Electrical Comfort Lift Combo System**

- Made of polyester fabric and ballistic binding.
- Unique, padded suspenders engineered to carry loads comfortably and distribute weight evenly without strain on lower back and hips.
- Easy carry handle design for simple adjustments and easy storage without spilling contents.
- Zippered top flap pouch to prevent spillage of tools when not in use.
- Built-in cordless drill pocket.
- Tape strap, tool snap and metal hammer holder.
- 3" Wide padded comfort belt with double tongue steel roller buckle.
- Fits waist sizes 29"- 46".



1604

**17 Pocket - 4 Piece Combo Apron**

- Made of polyester fabric and ballistic binding.
- 6 Main nail and tool pockets.
- 10 Smaller pockets for pliers, pencils, nail sets, two way radio, etc.
- Center pocket for tape, nails or other tools.
- 3" Wide padded belt with steel roller buckle.
- Fits waist sizes 29"- 46".



141604

**17 Pocket - 4 Piece Hi-Viz™ Combo Apron**

- Made of polyester fabric and ballistic binding.
- 6 Main nail and tool pockets.
- 10 Smaller pockets for pliers, pencils, nail sets, two way radio, etc.
- Center pocket for tape, nails or other tools.
- Hi-Viz™ webbing with reflective stripe.
- 3" Wide padded belt with steel roller buckle.
- Fits waist sizes 29"- 46".
- See entire Hi-Viz™ series on page 76.



1649



**11 Pocket - 4 Piece Combo Apron**

- › Made of polyester fabric and ballistic binding.
- › 5 Main nail and tool pockets.
- › 6 Smaller pockets for pliers, pencils, nail sets, etc.
- › Metal clip holds all measuring tape sizes.
- › Steel hammer loop.
- › 2" Wide padded web belt with steel roller buckle.
- › Fits waist sizes 29"- 46".

1429



**12 Pocket Apron**

- › Made of polyester fabric and ballistic binding.
- › 4 Main nail and tool pockets.
- › 6 Smaller pockets for pliers, pencils, nail sets, etc.
- › Center pocket for tape, nails or other tools.
- › Pry bar or combination square holder.
- › 2" Wide web belt with steel buckle.
- › Fits waist sizes 29"- 46".

1370



**8 Pocket Apron**

- › Made of polyester fabric and ballistic binding.
- › 4 Main nail and tool pockets.
- › 3 Smaller pockets for pliers, pencils, nail sets, etc.
- › Center pocket for tape, nails or other tools.
- › Steel hammer holder.
- › 2" Wide web belt with steel buckle.
- › Fits waist sizes 29"- 46".

1245



**6 Pocket Single Side Apron**

- › Made of polyester fabric and ballistic binding.
- › 2 Main nail and tool pockets.
- › 4 Smaller pockets for pliers, pencils, etc.
- › Metal clip for all sizes of measuring tapes.
- › Steel hammer holder.
- › 2" Wide web belt fits waists up to 46".

19427

**12 Pocket Construction Work Apron**

- › Oiled top grain leather.
- › 4 Main reversed nail and tool pockets.
- › 6 Smaller pockets fit pliers, nail sets, pencils, etc.
- › Center pocket for tape, nails or other tools.
- › Molded leather holder fits combination square.
- › Metal "snap-in" hammer loop.
- › 2" Heavy-duty leather belt with double tongue roller buckle.
- › Fits waist sizes 29"- 46".



175274

**12 Pocket Construction Work Apron**

- › Reversed top grain leather.
- › 4 Main nail and tool pockets.
- › 6 Smaller pockets fit pliers, nail sets, pencils, etc.
- › Double gussets keep front pockets wide open for easy access.
- › Center pocket for tape, nails or other tools.
- › Molded leather holder fits combination square.
- › Metal swinging hammer loop.
- › 2" Poly web belt with roller buckle.
- › Fits waist sizes 29"- 49".



174274

**12 Pocket Construction Work Apron**

- › Reversed top grain leather.
- › 4 Main nail and tool pockets.
- › 6 Smaller pockets fit pliers, nail sets, pencils, etc.
- › Center pocket for tape, nails or other tools.
- › Molded leather holder fits combination square.
- › Metal swinging hammer loop.
- › 2" Web belt with steel buckle.
- › Fits waist sizes 29"- 46".





### 12 Pocket Heavy-Duty Construction Work Apron

- › Heavy-duty suede leather.
- › Double gussets keep front pockets wide open for easy access.
- › 4 Main nail and tool pockets.
- › 6 Smaller pockets fit pliers, nail sets, pencils, etc.
- › Center pocket for tape measure, nails or other tools.
- › Leather combination square holder.
- › 2" Poly web belt with roller buckle.
- › Fits waist sizes 29" - 49".

1427X



### 12 Pocket Heavy-Duty Work Apron

- › Heavy-duty suede leather.
- › 4 Main nail and tool pockets.
- › 6 Smaller pockets fit pliers, nail sets, pencils, etc.
- › Center pocket for tape measure, nails or other tools.
- › Steel hammer loops.
- › Leather combination square holder.
- › 2" Poly web belt with metal buckle.
- › Fits waists sizes 29" - 46".

1370X3



### 8 Pocket Heavy-Duty Work Apron

- › Heavy-duty suede leather.
- › 4 Main nail and tool pockets.
- › 3 Smaller pockets fit pliers, nail sets, pencils, etc.
- › Center pocket for tape measure, nails or other tools.
- › Steel hammer loop.
- › 2" Poly web belt with quick-release buckle.
- › Fits waists sizes 29" - 46".



# NAIL & TOOL BAGS

Bags with our patented Sta-Open™ gusset pocket design have a smooth, curved bottom that makes grasping nails, fasteners or parts a breeze. Hammer holders and tape clips are positioned for quick access and easy tool return to keep your motion uninterrupted. Whether made of top grain leather or our rugged, but lightweight poly fabric, we've got a bag that's right for you.



# #PK1836

## 5 Pocket Framer's Nail & Tool Bag with Poly Web Belt

NAIL AND TOOL BAGS

Metal clip holds all measuring tape sizes.

Main nail & tool pockets.

Gussets keep front pockets wide open for greater access.

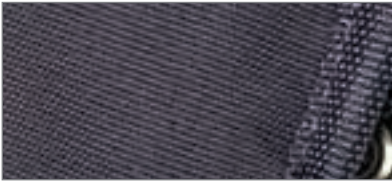
Removable metal hook to carry a cordless drill, nail guns or other power tools.

2" Poly web belt with quick release buckle.

Double layer of rugged, lightweight ballistic poly fabric.



### » KEY CATEGORY FEATURES



Ballistic poly fabric has soft feel but with added durability.



Polyester fabric and ballistic binding is lightweight but durable.



Heavy-duty top grain leather for strength and durability.



Heavy-duty suede leather provides a soft feel that's ready to wear.



Heavy-duty stitching and rivets for strength and durability.



Patented pouch handle design makes carrying and adjusting convenient.



Gusset pockets provide easy access to nails and fasteners.



Metal hook to hold cordless drill folds away when not in use.



Tape clip holds all sizes of measuring tapes.



5833

**9 Pocket Nail & Tool Bag**

- › Double layer of rugged, lightweight ballistic poly fabric.
- › Innovative handle design for easy adjustment and carrying.
- › 3 Main pockets for tools and nails.
- › Gussets keep front pockets wide open for greater access.
- › 6 Smaller pockets for hand tools, pencils, nail sets, etc.
- › 2 Steel hammer loops.



5836

**5 Pocket Professional Framers' Nail & Tool Bag**

- › Double layer of rugged, lightweight ballistic poly fabric.
- › Innovative handle design for easy adjustment and carrying.
- › 4 Pockets for nails, tools, etc.
- › Gussets keep front pockets wide open for greater access.
- › Metal clip holds all measuring tape sizes.



2836

**11 Pocket Carpenter's Ballistic Nail & Tool Bag**

- › Double layer of rugged, lightweight ballistic poly fabric.
- › Innovative handle design for easy adjustment and carrying.
- › Gussets keep front pockets wide open for greater access.
- › Bottoms of main pockets are reinforced for better resistance to abrasion.
- › Built-in utility knife pocket helps prevent accidental pouch punctures.
- › 2" Wide web belt with single tongue roller buckle.
- › Fits waist sizes 29" - 46".



2833

**13 Pocket Framers' Ballistic Nail & Tool Bag**

- › Double layer of rugged, lightweight ballistic poly fabric.
- › Innovative handle design for easy adjustment and carrying.
- › Gussets keep front pockets wide open for greater access.
- › Bottoms of main pockets are reinforced for better resistance to abrasion.
- › Built-in utility knife pocket helps prevent accidental pouch punctures.
- › 2" Wide web belt with single tongue roller buckle.
- › Fits waist sizes 29" - 46".



2823

**10 Pocket Ballistic Nail & Tool Bag**

- › Double layer of rugged, lightweight ballistic poly fabric.
- › Innovative handle design for easy adjustment and carrying.
- › 4 Main nail and tool pockets.
- › Steel hammer loop.
- › 6 Smaller pockets for pliers, pencils, nail sets, etc.
- › Metal clip holds all measuring tape sizes.
- › 2" Wide web belt with single tongue roller buckle.
- › Fits waist sizes 29" - 46".







PK1836

#### 5 Pocket Framers' Nail & Tool Bag with Poly Web Belt

- › Made of polyester fabric and ballistic binding.
- › 4 Pockets for nails, tools, etc.
- › 2" Poly web belt with quick release buckle.
- › Fits waist sizes 29"- 46".
- › Gussets keep front pockets wide open for greater access.
- › Metal clip holds all measuring tape sizes.
- › Removable metal hook to carry cordless drill, nail guns or other power tools.



1620

#### 11 Pocket Nail & Tool Bag

- › Made of polyester fabric and ballistic binding.
- › 2 Main pockets for tools and nails.
- › 2 Additional upper pockets.
- › 6 Smaller pockets for hand tools, pencils, nail sets, etc.
- › Pry bar or combination square holder.
- › Steel hammer loops.



1823

#### 8 Pocket Nail & Tool Bag

- › Made of polyester fabric and ballistic binding.
- › 2 Main nail and tool pockets.
- › Steel hammer holders.
- › 6 Smaller pockets for pencils, nail sets, etc.
- › May be worn on left or right side.



141833

#### 10 Pocket Hi-Viz™ Nail & Tool Bag with Poly Web Belt

- › Made of polyester fabric and ballistic binding.
- › Innovative handle design for easy adjustment and carrying.
- › Gussets keep front pockets wide open for greater access.
- › Hi-Viz™ webbing with reflective stripe.
- › 4 Main pockets for tools and nails.
- › 6 Smaller pockets for hand tools, pencils, nail sets, etc.
- › 2" Poly web belt with quick release buckle.
- › Fits waist sizes 29"- 46".
- › See entire Hi-Viz™ series on page 76.



1933

#### 10 Pocket Carpenter's Nail & Tool Bag

- › Heavy-duty top grain leather.
- › 2 Main nail and tool pockets.
- › 2 Additional upper pockets.
- › 6 Smaller pockets fit pliers, nail sets, pencils, etc.
- › Metal clip holds all measuring tape sizes.
- › Fits belts up to 2 3/4" wide.
- › Steel hammer loop.



179354

**10 Pocket Carpenter's Nail & Tool Bag**

- › Reversed top grain leather.
- › Gussets keep front pockets wide open for greater access.
- › 2 Large capacity main nail and tool pockets.
- › 2 Additional upper pockets.
- › 6 Smaller pockets fit pencils, nail sets, pliers, etc.
- › Steel hammer loop.
- › Metal clip holds all sizes of measuring tapes.



179334

**10 Pocket Carpenter's Nail & Tool Bag**

- › Reversed top grain leather.
- › 2 Large capacity main nail and tool pockets.
- › 2 Additional upper pockets.
- › 6 Smaller pockets fit pencils, nail sets, pliers, etc.
- › Fits belts up to 2 3/4" wide.
- › 2 Steel hammer loops.



176834

**9 Pocket Carpenter's Nail & Tool Bag**

- › Reversed top grain leather.
- › 2 Large capacity main nail and tool pockets.
- › Additional upper pocket.
- › 6 Smaller pockets fit pencils, nail sets, pliers, etc.
- › Fits belts up to 2 3/4" wide.
- › 2 Steel hammer loops.



178234

**8 Pocket Carpenter's Nail & Tool Bag**

- › Reversed top grain leather.
- › 2 Large capacity main nail and tool pockets.
- › 6 Smaller pockets fit pencils, nail sets, pliers, etc.
- › Fits belts up to 2 3/4" wide.
- › 2 Steel hammer loops.



424X

**10 Pocket Large Capacity Nail & Tool Bag**

- › Heavy-duty suede leather.
- › 4 Main nail and tool pockets.
- › 6 Smaller pockets fit pliers, nail sets, pencils, etc.
- › Leather holder fits up to 30' measuring tape.
- › Fits belts up to 2 3/4" wide.
- › Steel hammer loop.





1923X

**10 Pocket Carpenter's Nail & Tool Bag**

- › Heavy-duty suede leather.
- › 4 Main nail and tool pockets.
- › 6 Smaller pockets fit pliers, nail sets, pencils, etc.
- › Fits belts up to 2¾" wide.
- › Steel hammer loop.
- › Metal clip holds all measuring tape sizes



1823X

**8 Pocket Carpenter's Nail & Tool Bag**

- › Heavy-duty suede leather.
- › 2 Main nail and tool pockets.
- › 6 Smaller pockets fits pliers, nail sets, pencils, etc.
- › Fits belts up to 2¾" wide.
- › 2 Steel hammer loops.
- › May be worn on left or right side.



1P489X

**3 Pocket Nail & Tool Bag with Poly Web Belt**

- › Heavy-duty suede leather.
- › 2 Main nail and tool pockets.
- › Smaller pocket fits pliers, nail sets, pencils, etc.
- › Leather tape strap.
- › Leather side loop for hammer or combination square holder.
- › 2" Poly web belt with quick release buckle.
- › Fits waist sizes 29" - 46".



483X

**2 Pocket Standard Nail & Tool Bag**

- › Heavy-duty suede leather.
- › 2 Main nail and tool pockets.
- › Fits belts up to 2¾" wide.



444X

**Standard Size Single Bag**

- › Heavy-duty suede leather.
- › Large capacity nail and tool pocket.
- › Fits belts up to 2¾" wide.



69X

**Clip Pocket**

- › Heavy-duty suede leather.
- › Pocket can be clipped to belts, pants, other pockets, work aprons, etc.
- › Heavy-duty metal clip on back.
- › Perfect for holding all type of fasteners.



# TOOL POUCHES

We've got 'em covered with our offering of top grain leather, or heavy-duty fabric, tool pouches in multiple configurations to satisfy the needs of just about any electrician, maintenance technician, drywaller, or all-around handyman. Pockets and sleeves are right-size designed to fit the tools you use most. So keep the tools of your trade right at hand, organized, and ready to go.



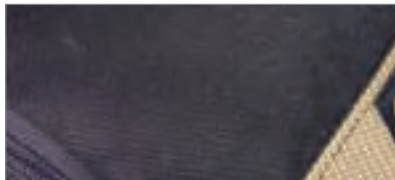
## 13 Pocket Electrician's Tool Pouch with Plastic Tray



### » KEY CATEGORY FEATURES



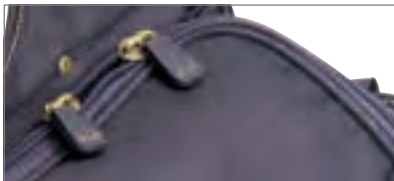
Double layer of rugged, lightweight ballistic poly fabric.



Polyester fabric and ballistic binding is lightweight but durable.



Heavy-duty top grain leather for strength and durability.



Zippered top keeps tools secure when transporting.



Multi-compartment tray to keep small parts and fasteners organized.



Patented carry handle design for easy transporting.



Padded shoulder strap for comfortable, hands-free carrying.



Molded pockets help tools fit better.



Tape strap for quick access to tape rolls.



5508

**20 Pocket Professional Electrician's Tool Pouch**

- › Double layer of rugged, lightweight ballistic poly fabric.
- › Handle and padded shoulder strap design for easy storage and the ideal way to carry loaded tool pouch.
- › Heavy-duty tool snap hook and electrical tape strap.
- › Steel hammer loop.
- › Adjustable shoulder strap.
- › 6 Large screwdriver holders.



5505

**12 Pocket Professional Electrician's Tool Pouch**

- › Double layer of rugged, lightweight ballistic poly fabric.
- › 2 Large main pockets and 3 smaller pockets.
- › 6 Large screwdriver holders.
- › Electrical tape chain and tool snap.
- › Metal clip holds all measuring tape sizes.
- › Innovative handle design for easy adjustment and carrying.



5503

**8 Pocket Professional Electrician's Tool Pouch**

- › Double layer of rugged, lightweight ballistic poly fabric.
- › 2 Large main pockets and 3 smaller pockets.
- › Electrical tape chain.
- › 2 Large screwdriver holders.
- › Metal clip holds all measuring tape sizes.
- › Innovative handle design for easy adjustment and carrying.



141603

**8 Pocket Hi-Viz™ Electrician's Tool Pouch**

- › Made of polyester fabric and ballistic binding.
- › Innovative handle design for easy adjustment and carrying.
- › Multi-use pockets.
- › 2 Large screwdriver holders.
- › Hi-Viz™ webbing with reflective stripe.
- › Heavy-duty tool snap and electrical tape chain.
- › Metal clip holds all measuring tape sizes.
- › See entire Hi-Viz™ series on page 76.



1509

**21 Pocket Professional Electrician's Tool Pouch**

- › Made of polyester fabric and ballistic binding.
- › Zippered top flap to prevent spillage of tools when not in use.
- › Zippered back pocket for 8" x 5" writing pad.
- › Ergonomic rubber handle and padded shoulder strap design for easy storage and the ideal way to carry loaded tool pouch.
- › Outside pocket to hold cell phone and 3 outside large screwdriver holders.



1510

**13 Pocket Electrician's Tool Pouch with Plastic Tray**

- › Made of polyester fabric and ballistic binding.
- › 8" x 3" Multi-compartment plastic tray to organize small parts slides securely into bottom of pouch.
- › 3 Large screwdriver side pockets.
- › Handle and padded shoulder strap design for easy storage and the ideal way to carry loaded tool pouch.
- › Divided main pocket with web loops for large tools.
- › Electrical tape web strap.



1553

#### Large Ziptop™ Utility Pouch

- › Made of polyester fabric and ballistic binding.
- › Double-pull zipper cover secures parts and tools in pouch and accommodates long-handled tools.
- › Hook and loop back feature helps keep cover out of the way.
- › Slots, sleeves and straps to accommodate a variety of hand tools.



1524

#### Medium Ziptop™ Utility Pouch

- › Made of polyester fabric and ballistic binding.
- › Snap-back feature helps keep cover out of the way.
- › 'J'-clip, tape strap and measuring tape clip.
- › Zipper cover secures parts and tools in pouch and accommodates long-handled tools.



1523

#### Small Ziptop™ Utility Pouch

- › Made of polyester fabric and ballistic binding.
- › Snap-back feature helps keep cover out of the way.
- › Additional large front panel pocket.
- › Zipper cover secures parts and tools in pouch and accommodates long-handled tools.



1503

#### 9 Pocket Electrical & Maintenance Pouch

- › Made of polyester fabric.
- › Attach to belt with clip or belt loop.
- › Heavy-duty clip on back.
- › 3 Internal pocket sleeves and 6 external pockets.
- › Electrical tape sling.



141503

#### 9 Pocket Hi-Viz™ Electrical & Maintenance Pouch

- › Made of polyester fabric.
- › Attach to belt with clip or belt loop.
- › Heavy-duty clip on back.
- › Electrical tape sling.
- › Side pockets for screwdrivers.
- › Hi-Viz™ webbing with reflective stripe.
- › See entire Hi-Viz™ series on page 76.



1505

#### 10 Pocket Electrician's Tool Pouch

- › Made of polyester fabric and ballistic binding.
- › 4 Large main pockets for tools, esters, etc.
- › 2 Smaller pockets, and 4 large screwdriver holders.
- › Strap to hold electrical tape.
- › Metal tape clip and tool snap.



1504

#### 9 Pocket Multi-Purpose "Carry-All" Tool Pouch

- › Made of polyester fabric.
- › Main zippered compartment with 7 internal pockets.
- › 2 External pockets and 5 web loops.
- › Carabiner for keys, small tools, etc.



1501

#### 4 Pocket Tool and Cell Phone Holder

- › Made of polyester fabric.
- › Attach to belt with snap closure, or carry securely in pocket with wide padded flap.
- › 4 Pockets, and one padded pocket to fit most compact cell phones.
- › Webbing slot for small flashlights or other tools.
- › Electrical tape sling.



521

**8 Pocket Electrician's Tool Pouch**

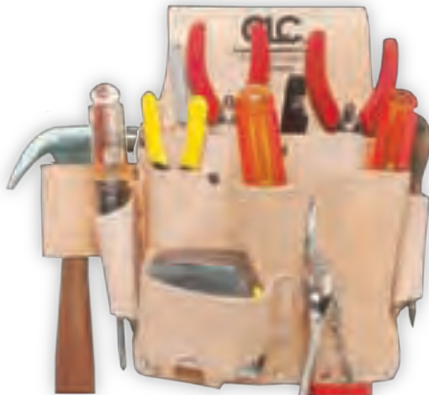
- › Top grain leather.
- › Large box-shaped main pocket for extra large tool capacity.
- › 7 Smaller front and side pockets hold screwdrivers, wrenches, etc.
- › Tape chain and metal tool clip.
- › Fits belts up to 2¾" wide.
- › Leather hammer loop.



19521

**8 Pocket Electrician's Tool Pouch**

- › Oiled top grain leather.
- › Large box-shaped main pocket for extra large tool capacity.
- › 7 Smaller front and side pockets hold screwdrivers, wrenches, etc.
- › Tape chain and metal tool clip.
- › Fits belts up to 2¾" wide.
- › Leather hammer loop.



W500

**8 Pocket Electrician's Tool Pouch**

- › Top grain leather.
- › Main deep pocket.
- › 6 Additional front and side pockets for screwdrivers, wrenches, etc.
- › Fits belts up to 2¾" wide.
- › Leather hammer loop.
- › Leather holder fits up to 30' measuring tape.
- › Tape chain and metal tool clip.



K500

**9 Pocket Top-of-the-Line Electrician's Tool Pouch**

- › Chrome-tanned top grain leather.
- › Main large pocket.
- › 7 Additional front and side pockets for screwdrivers, wrenches, etc.
- › Fits belts up to 2¾" wide.
- › Leather hammer loop.
- › Leather holder fits up to 30' measuring tape.
- › Tape chain and metal tool clip.
- › 500 - Same as above using top grain leather.



408

**Box-Shaped All-Purpose Pouch**

- › Top grain leather.
- › Main molded pocket 4¼" x 7½".
- › Fiber liner resists utility knife blade cut-through.
- › Fits belts up to 2" wide.
- › Metal tape clip for all sizes of measuring tapes.



407

**Box-Shaped All-Purpose Pouch**

- › Top grain leather.
- › Main molded pocket 4¼" x 7½".
- › Fits belts up to 2" wide.
- › 4071 - Same as above with extra flap to protect hip pocket.



7041

**Flat-Type All Purpose Pouch**

- › Top grain leather.
- › Overall pocket size 3½"W x 4½"H.
- › Fits belts up to 2¼" wide.
- › Leather flap to protect hip pocket.





**W603**

**7 Pocket Maintenance Tool Pouch**

- › Top grain leather.
- › Main large pocket.
- › 5 front and side pockets fit pliers, wrenches, etc.
- › Fits belts up to 2¾" wide.
- › Leather holder fits up to 12' measuring tape.
- › Tape chain and metal tool clip.
- › Leather hammer loop.



**K485R1**

**8 Pocket Standard Drywall's Tool Pouch**

- › Chrome-tanned top grain leather.
- › Double-row main pockets designed for drywall's hand tools.
- › Sharpening stone holder.
- › Metal clip holds all measuring tape sizes
- › Steel hammer loop.
- › Fits belts up to 3¾" wide.



**W438**

**6 Pocket Maintenance Tool Pouch**

- › Top grain leather.
- › Main molded deep pocket.
- › 2 Front molded tool pockets.
- › 2 Tapered screwdriver holders.
- › Fits belts up to 2¾" wide.
- › Leather holder fits up to 30' measuring tape.
- › Tape chain and metal tool clip.



**526**

**17 Pocket Electrician's & Maintenance Tool Carrier**

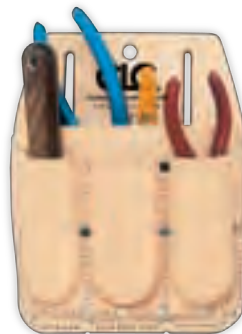
- › Top grain leather.
- › Box-shaped design prevents tipping.
- › Electrical tape chain.
- › Large divided main pocket for extra tool capacity.
- › Leather reinforced carrying handle.



**700**

**5 Pocket Tool Pouch**

- › Top grain leather.
- › Large main pocket.
- › 2 Smaller molded front pockets.
- › 2 Screwdriver loops.
- › Fits belts up to 2¾" wide.



**415**

**4 Pocket Tool Pouch**

- › Top grain leather.
- › Large main pocket.
- › 3 Front molded pockets.
- › Fits belts up to 2¾" wide.



**409**

**Box-Shaped Pouch With Loops**

- › Top grain leather.
- › Main molded pocket.
- › 2 Small tool loops.
- › Fits belts up to 2¾" wide.



# TOOL HOLDERS

Some tools deserve special treatment. We've created a line of tool holders so you can get right to that tool you use the most. Whether it's your tape measure, hammer, pliers, cordless drill, or cell phone, we've got a holder to keep it close at hand. Check out this full line of versatile holders and we're sure you'll find one that's just right. See our complete line of mobile device holders including our new Keystone™ series.



# #1514

## BlackBerry® Holder

Designed for PDA, BlackBerry®-style mobile device, or iPhone®, includes ear-bud pocket and sleeves for business cards, credit cards, pens or touch-screen stylus.

Belt clip swivels to accommodate wearing on left or right side.

Magnetic shut off feature.



# #5023

## Cordless Drill Holster

Safety strap with quick-release buckle.

Holds most brands of T-handle drills.

Multiple outer pockets and sleeves for complete bit organization.

Angled for best balance.



### » KEY CATEGORY FEATURES



Polyester fabric is lightweight but durable.



Heavy-duty top grain leather for strength and durability.



Heavy-duty stitching for strength and durability.



Rivet reinforced for added strength.



Bar tacking for added strength and durability.



Swivel clip allows for wearing on left or right side.



Magnetic closure for easy-open and easy-close.



Drawstring closure helps keep parts secure.



Holster strap with Velcro® back to keep strap out of the way when not in use.



**5020**

**Cordless Drill Holster**

- › Made of polyester fabric.
- › Holds most 3/8" - 1/2" drills up to 18 volts.
- › Pocket for drill bits or accessories.
- › Safety strap with hook and loop fastener.
- › Hook & loop backing to keep strap back when not in use.



**5023**

**Deluxe Cordless Drill Holster**

- › Made of polyester fabric.
- › Holds most brands of T-handle drills.
- › Multiple outer pockets and sleeves for complete bit organization
- › Safety strap with quick-release buckle.
- › Hook & loop backing to keep strap back when not in use.



**5021**

**Impact Driver Holster**

- › Made of polyester fabric.
- › Designed for smaller 10.8V-18V drivers.
- › Adjustable strap and quick-release buckle holds driver securely in place.
- › Hook & loop backing to keep strap back when not in use.



**1100**

**3 Multi-Purpose, Clip-On, Zippered Bags**

- › Made of polyester fabric.
- › Includes 3 convenient sizes: 9" x 7", 7" x 6" and 6" x 5".
- › Durable clip hangs on tool belts, belt loops, etc.
- › Carry and organize all your misc. parts, tools and accessories.



**1100M**

**3 Mossy Oak®, Clip-On Zippered Bags**

- › Includes 3 convenient sizes: 9" x 7", 7" x 6" and 6" x 5".
- › Durable clip hangs on tool belts, belt loops, etc.
- › Use for job, fishing, hunting, camping, boating and more.
- › See entire Sportsman™ series on page 79.



**1102**

**2 Multi-Purpose Zippered Bags**

- › Made of polyester fabric.
- › Includes 2 convenient sizes: 12" x 6" and 13" x 7".
- › Zippered for security.
- › Carry and organize all your misc. parts, tools and accessories.



**1105**

**5 Pocket Cell Phone and Tool Holder**

- › Made of polyester fabric.
- › Holds most brands of compact cell phones.
- › Securely holds small tools and accessories like pliers, mini-flashlights, screwdrivers, multi-tools, etc.
- › Versatile 3-way attachment for pants, web suspenders, work aprons, etc.



**1104**

**4 Pocket Multi-Purpose Tool Holder**

- › Made of polyester fabric.
- › Versatile 3-way attachment for pants, web suspenders, work aprons, etc.
- › Securely holds small tools or accessories like pliers, mini-flashlights, screwdrivers, etc.



**1103**

**3 Pocket Multi-Purpose Tool Holder**

- › Made of polyester fabric.
- › Versatile 3-way attachment for pants, web suspenders, work aprons, etc.
- › Securely holds small tools or accessories like pliers, mini-flashlights, screwdrivers, etc.



5003

**Electrical Meter / Tester / Phone Holder**

- › Made of polyester fabric.
- › Safety strap with hook and loop fastener.
- › Heavy-duty metal clip on back.
- › 6"H x 3"W x 2"D



5539

**Padded Steel Hammer Loop**

- › Made of polyester fabric.
- › Cradle design prevents hammer pivoting.
- › Fits belts up to 2¾" wide.



6439

**Steel Hammer Loop**

- › Double layer of rugged, lightweight ballistic poly fabric.
- › Cradle design prevents hammer pivoting.
- › Fits belts up to 2¾" wide.



5002

**Hammer Tacker / Stapler Holder**

- › Made of polyester fabric.
- › Holds most brands of hammer or tacker staplers.



1518

**Tool & Knife Holder**

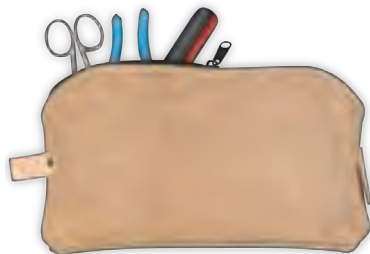
- › Made of polyester fabric.
- › Designed for utility and "lock-back"-style knives, pliers or snips.
- › Sleeves for pens, markers, carpenter's pencils, with integral measuring tape clip.
- › Easily snaps on to belts up to 2" wide.



767P

**Plier / Tool Holder**

- › Made of polyester fabric.
- › Fits narrow-type hand tools up to 10" long.
- › Carabiner loop holder.
- › Fits belts up to 2¾" wide.



539X

**All-Purpose Tool Bag**

- › Heavy-duty suede leather.
- › Accommodates a variety of tools.
- › Full-length zippered closure.



1206

**12" Climate Gear™ Large Parts Bag**

- › Durable interwoven tarpaulin construction.
- › Polyester bottom with rubber strip.
- › Weather resistant zipper.
- › Great for organizing hand tools, parts, bits, and fasteners.
- › 12"L x 3"W x 8"H
- › See entire Climate Gear™ series on page 69.



1205

**9" Climate Gear™ Small Parts Bag**

- › Durable interwoven tarpaulin construction.
- › Polyester bottom with rubber strip.
- › Weather resistant zipper.
- › Great for organizing parts, bits, and fasteners.
- › 9"L x 2"W x 6"H
- › See entire Climate Gear™ series on page 69.



1108

### 3 Multi-purpose, Clip-On Bag Combo

- › Made of polyester fabric.
- › Designed for plumber, electricians, maintenance personnel and general contractors.
- › Easy-lock/push button-release drawstring system.
- › Durable clip hangs on tool belts, belt loops, etc.
- › One 4" x 3" x 9" Bag  
One 3½" x 2½" x 8" Bag  
One 3" x 2" x 6½" Bag



5127

### Large Cell Phone Holster

- › Versatile 3-way attachment for belts, web suspenders, pants, etc.
- › Holds most brand of large cell phones.
- › Heavy-duty clip on back and padded interior to protect cell phones.
- › Elastic side pockets for pens, pencils, small tools, etc.



145127

### Large Hi-Viz™ Cell Phone Holster

- › Versatile 3-way attachment for belts, web suspenders, pants, etc.
- › Holds most brand of large cell phones.
- › Heavy-duty clip on back and padded inside to protect cell phones.
- › Elastic side pockets for pens, pencils, small tools, etc.
- › Hi-Viz™ webbing with reflective stripe.
- › See entire Hi-Viz™ series on page 77.



5124

### Cell Phone Holder

- › Specially designed to securely hold newer and smaller cell phones.
- › Versatile 2-way attachment for belts, pants, etc.
- › Heavy-duty clip on back, elastic side panels and padded interior to protect cell phones.



5124M

### Mossy Oak® Cell Phone Holder

- › Specially designed to securely hold newer and smaller cell phones.
- › Versatile 2-way attachment for belts, pants, etc.
- › Heavy-duty clip on back, elastic side panels and padded interior to protect cell phones.
- › See entire Sportsman™ series on page 79.



145124

### Hi-Viz™ Cell Phone Holder

- › Specially designed to securely hold newer and smaller cell phones.
- › Versatile 2-way attachment for belts, pants, etc.
- › Heavy-duty clip on back, elastic side panels and pad.
- › Hi-Viz™ webbing with reflective stripe.
- › See entire Hi-Viz™ series on page 77.



5125

### Universal Cell Phone Holder

- › Holds most brands of compact cell phones.
- › Versatile 3-way attachment for belts, web suspenders, pants, etc.
- › Heavy-duty clip on back and padded interior to protect cell phones.



5123

### Neoprene Cell Phone Holder

- › Specially designed to securely hold newer and smaller cell phones.
- › Versatile 2-way attachment for belts, pants, etc.
- › Heavy-duty clip on back, elastic side panels and pad.



# KEYSTONE™ series

## Mobile Device Holders

CLC® introduces a new, stylish line of mobile device holders and personal organizers for people on the go. No more digging in your pockets or fumbling through your purse to find your cell phone, walkie-talkie, PDA, BlackBerry®, or MP3 player. CLC Keystone™ Series holders are designed to accommodate most popular sizes of mobile devices and allow them to be easily clipped to belts, waistbands, suspenders, or purse straps. A Keystone™ holder makes your mobile device conveniently accessible.



1514

### BlackBerry® Holder

- › Designed for PDA, BlackBerry®-style mobile device, or iPhone®.
- › Includes ear-bud pocket and sleeves for business cards, credit cards, pens or touch-screen stylus.
- › Belt clip swivels to accommodate wearing on left or right side.
- › Magnetic shut off feature.



1516

### Gadget Holder™

- › Designed for larger PDA, mobile device, iPod®, small game console, or camera.
- › Includes ear-bud pocket and sleeves for business cards, credit cards, pens, markers, or touch-screen stylus, with swivel belt clip.
- › Belt clip swivels to accommodate wearing on left or right side.



1517

### Horizontal Cell Holder

- › Designed for cell phone, BlackBerry®-style mobile device, or larger iPod®, or iPhone®.
- › Includes ear-bud pocket and sleeve for business or credit cards.
- › Belt clip swivels to accommodate wearing on left or right side.



1520

### Small Cell Holder

- › Designed for smaller cell phone.
- › Neoprene inserts and pocket flap with magnetic closure.
- › Webbing loops for pens and markers, plus carabiner for keys.
- › Belt clip swivels to accommodate wearing on left or right side.



1521

### Large Cell Holder

- › Designed for larger cell phone or walkie-talkie.
- › Neoprene inserts and pocket flap with magnetic closure.
- › Webbing loops for mini flashlight, pens and markers, plus carabiner for keys.
- › Belt clip swivels to accommodate wearing on left or right side.



1511

### Personal Organizer

- › Designed for cell phone and valuables, includes sleeves for cards, mesh pocket for keys, earphones, or Bluetooth® device.
- › Neoprene-padded cell phone holder, pocket flap with magnetic closure.
- › Webbing loop for mini flashlight, plus carabiner.
- › Belt clip swivels to accommodate wearing on left or right side.



464

**16'- 30' Measuring Tape Holder**

- › Top grain leather.
- › Molded leather retains shape.
- › Safety snap included.
- › Easy out keel.
- › Fits belts up to 2¾" wide.



465

**16'- 30' Tape Rule Holder**

- › Top grain leather.
- › Holds larger tape rules.
- › Molded leather front retains its shape.
- › Easy out keel.
- › Fits belts up to 2¾" wide.



839

**"Snap-In" Swinging Hammer Holder**

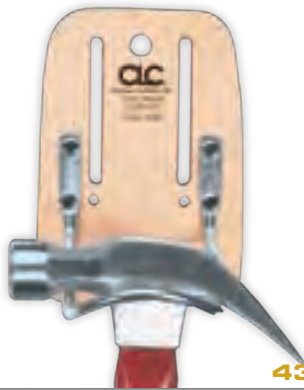
- › Top grain leather.
- › Snap-in design for quick insertion.
- › Swing feature keeps hammer vertical.
- › Fits belts up to 2¾" wide.



739

**Steel Swinging Hammer Holder**

- › Top grain leather.
- › Cradle design keeps hammer secure.
- › Swing feature keeps hammer vertical.
- › Fits belts up to 2¾" wide.



439

**Steel Loop Hammer Holder**

- › Top grain leather.
- › Cradle design reduces hammer movement.
- › Fits belts up to 2¾" wide.



426

**Standard Hammer / Flashlight Holder**

- › Top grain leather.
- › Long lasting leather loop.
- › Fits belts up to 2¾" wide.



DRL91

**Cordless Drill Holster**

- › Top grain leather.
- › Fits most ¾" drills.
- › Center-balanced design counters battery weight.
- › 2 Front pockets hold drill bits, pencils, etc.
- › Hook & loop safety strap.
- › Fits belts up to 2½" wide.



902

**2 Pocket Tool / Plier Holder**

- › Top grain leather.
- › Loop-style pockets stay open.
- › Tapered screwdriver holder.
- › 2 Front tool snaps.
- › Fits belts up to 2¼" wide.



970L1

**3 Pocket Glazier's Tool Holder**

- › Top grain leather.
- › 3 Molded pockets retain shape.
- › Fits most glass cutters.
- › Front leather strap holds measuring tape.
- › Fits belts up to 2" wide.





417

**Plier / Tool Holder**

- › Top grain leather.
- › Molded, open-bottom design holds a variety of tools.
- › Fits belts up to 2¾" wide.



418

**Plier / Tool Holder**

- › Top grain leather.
- › Molded, closed-bottom design retains shape.
- › Fits belts up to 2¼" wide.



449

**Tool / Utility Knife Sheath**

- › Top grain leather.
- › Holds knives and narrow tools.
- › Fits belts up to 2" wide.



768

**Deluxe Plier Holder**

- › Top grain leather.
- › Fits narrow-type hand tools up to 10" long.
- › Molded leather retains shape.
- › Slotted safety snap.



767

**Plier Holder**

- › Top grain leather.
- › Fits narrow-type hand tools up to 10" long.
- › Molded leather retains shape.
- › Fits belts up to 2¼" wide.



328

**Economy Plier / Tool Holder**

- › Top grain leather.
- › Fits narrow-type hand tools up to 10" long.
- › Fits belts up to 2½" wide.



453

**Utility Knife Sheath**

- › Top grain leather.
- › Fiber liner resists cut-through.
- › Fits belts up to 2¾" wide.



67

**Box-Shaped Utility Knife Sheath**

- › Top grain leather.
- › Fits most curved knives.
- › Fiber liner resists cut-through.
- › Fits belts up to 2¼" wide.



441

**Cement Trowel Pouch**

- › Top grain leather.
- › Fits 3" wide trowels.
- › Fits belts up to 2¼" wide.



# SOFTSIDE TOOL CARRIERS

We offer the most complete line of tool bags in the industry. Check out our line of patented Traytotes™, our extra accessible BigMouth® bags, or our hot-selling bucket organizers. We have a bag to fill every need. Better still is how each bag is organized internally with plenty of pockets and straps to keep your hand tools in place. Our EasySeat® and RoundUps® bucket trays “round out” our offering of 5-gallon bucket organizers and accessories.



## 23 Pocket - Large Electrical & Maintenance Tool Carrier

- Padded carrying handle.
- 7 Inside pockets to organize a wide range of tools and accessories.
- Large main divided pockets with elastic loops to accommodate large tools.
- Box shaped design prevents tipping.
- Metal clip holds all measuring tape sizes.
- 11" x 6" Multi-compartment plastic tray included that slides securely into bottom of tool carrier to organize small parts.
- Adjustable shoulder strap.



SOFTSIDE TOOL CARRIERS

### » KEY CATEGORY FEATURES



Polyester fabric is lightweight but durable.



Metal handle bar with molded foam grip for stability and comfort.



Multi-compartment tray to keep small parts and fasteners organized.



MegaMouth™ bag opening for easy inspection and access to parts and tools.



Padded handles make carrying more comfortable.



Roller wheels for convenient transport of heavy loads.



Molded plastic base resists abrasion and moisture.



Padded shoulder strap for comfortable, hands-free carrying.



Rubber feet help protect corners from wear.



1528

**23 Pocket - Large Electrical & Maintenance Tool Carrier**

- › 11" x 6" Multi-compartment plastic tray included that slides securely into bottom of tool carrier to organize small parts.
- › 16 Multi-use outside pockets and 7 inside to organize a wide range of tools and accessories.
- › Box shaped design prevents tipping over.
- › Extra padded carrying handle and adjustable shoulder strap.
- › Electrical tape strap.
- › 11" L x 10" W x 19" H



1526

**23 Pocket - Electrical & Maintenance Tool Carrier**

- › 7" x 5½" Multi-compartment plastic tray included, slides securely into bottom of pouch.
- › Box-shaped design prevents tipping over.
- › Pockets for drill bits and tips, testers, pliers, screwdrivers, etc.
- › Extra padded carrying handle and adjustable shoulder strap.
- › Metal tool snap and electrical tape strap.
- › 8" L x 8" W x 17" H



1527

**25 Pocket - Electrical & Maintenance Tool Carrier**

- › Metal-free, corrosion-free maintenance tool carrier, ideal for outdoor uses, marine, automotive, plumbing, electrical and general applications.
- › Box-shaped design prevents tipping over.
- › Padded reinforced web carrying handle.
- › Web tape strap.
- › 8" L x 8" W x 15" H



1529

**16 Pocket - 16" Center Tray Tool Bag**

- › 13½" x 9" Multi-compartment plastic tray included, stores into middle compartment for easy access to the rest of bag contents.
- › 8 Pockets outside and 8 inside to organize a wide range of tools and accessories.
- › Main pocket with web loops to accommodate large tools.
- › Extra padded carrying handles and adjustable shoulder strap.
- › Metal tool snap and electrical tape strap.
- › 16" L x 9" W x 9" H



1139

**12 Pocket - Large Traytote™ Bag**

- › 12 Outside pockets to organize a wide range of tools and accessories.
- › 13½" x 9" Multi-compartment plastic tray included, slides securely into bottom of bag.
- › Reinforced web carrying handles
- › Opens wide for easy access.
- › Heavy-duty stitching and bar tacking at all stress points.
- › 15" L x 9" W x 12" H



1137

**14 Pocket - Traytote™ Bag**

- › 14 Outside pockets to organize a wide range of tool and accessories.
- › 11" x 6" Multi-compartment plastic tray slides securely into bottom of bag.
- › Reinforced web carrying handles.
- › Opens wide for easy access to bag contents.
- › Heavy-duty stitching and bar tacking at all stress points.
- › 12" L x 8" W x 12" H



1530

**43 Pocket - Electrical & Maintenance Tool Carrier**

- › 7" x 5½" Multi-compartment plastic tray included.
- › 2 Window pockets for easy view of pocket contents, one removable and one stationary.
- › Box-shaped design prevents tipping over.
- › Pockets for drill bits and tips, cell phone, electrical tester, electrical tape strap, etc.
- › 23"L x 12"W x 15"H



1141

**36 Pocket - Double Traytote™ Bag**

- › 36 Multi-use pockets outside.
- › Two 11" x 6" multi-compartment plastic trays included, slides securely into bottom of bag.
- › Pockets for cordless drill, cell phone, 2-way radio, etc.
- › Padded carrying handles and adjustable shoulder strap.
- › 23"L x 9"W x 12"H



1535

**37 Pocket - 18" Tote Bag with Top-Side Plastic Tray**

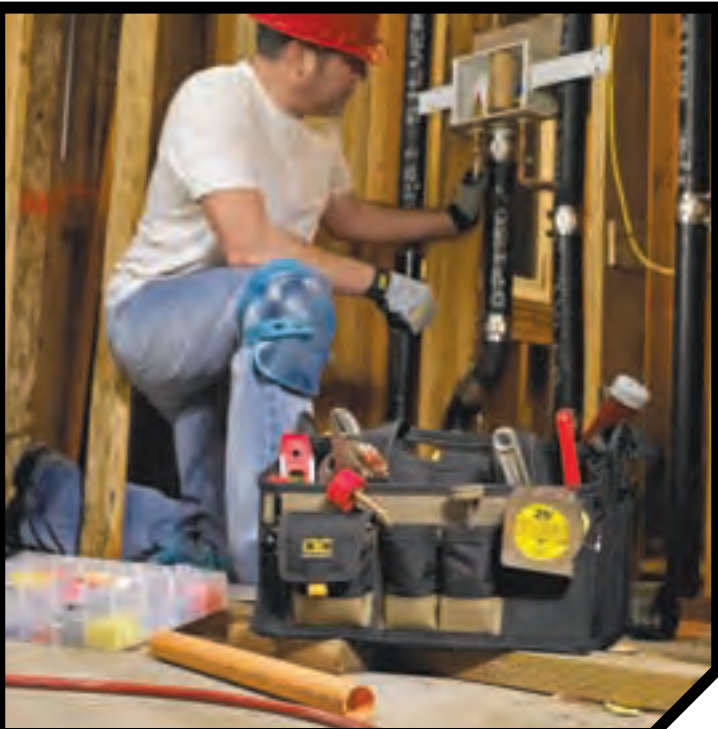
- › 13 Pockets inside and 24 pockets outside to organize tools and accessories.
- › Padded web carrying handles and adjustable shoulder strap.
- › 13½" x 3" Multi-compartment plastic tray to organize small parts on top for easy access.
- › Large zippered outside pocket and heavy-duty tape clip.
- › 18"L x 11"W x 11"H



1534

**23 Pocket - 16" Tote Bag with Top-Side Plastic Tray**

- › 10 Pockets inside and 13 pockets outside to organize tools and accessories.
- › Padded web carrying handles and adjustable shoulder strap.
- › 10" x 3" Multi-compartment plastic tray to organize small parts, recessed in top for easy access.
- › 16"L x 8"W x 11"H



1533

**16 Pocket - 12" Tote Bag with Top-Side Plastic Tray**

- › 3 Pockets inside and 13 pockets outside to organize tools and accessories.
- › Padded web carrying handles.
- › Abrasion resistant rubber feet.
- › 8" x 3" Multi-compartment plastic tray to organize small parts, recessed in top for easy access.
- › 12"L x 8"W x 9"H



1582

**21 Pocket - 15" Zipper Top Tool Carrier with Molded Base**

- › Exclusive tray system for small parts and accessories.
- › 12 External pockets, including one closed flap pocket.
- › Carabiner and padded shoulder strap.
- › 8 Inside pockets, with 4 webbing loops and a zipper pocket.
- › Molded hard-plastic base with deep-tread pattern.
- › 15"L x 8½"W x 12½"H



1581

**26 Pocket - 15" Open Top Tool Bag with Molded Base**

- › Hard-molded top rim keeps bag open for easy access.
- › 12 External pockets, including 2 oversize pockets and one closed flap pocket.
- › Carabiner, electrical tape sling, and padded shoulder strap.
- › Interior includes 5 open pockets, 6 internal webbing loops, zipper pocket, and elastic strap for hex bit storage.
- › Molded hard-plastic base with deep-tread pattern.
- › 15"L x 8"W x 9¾"H



1111

**7 Pocket - 24" All Purpose Gear Bag**

- › All-purpose gear bag perfect for carrying air hoses, power tools, extension cords, etc.
- › 7 Outside pockets to organize small tools or accessories.
- › Padded adjustable shoulder strap.
- › Abrasion resistant rubber feet.
- › Padded carrying handles.
- › 24"L x 12"W x 12"H



141111

**7 Pocket - 24" Hi-Viz™ Gear Bag**

- › All-purpose gear bag perfect for carrying air hoses, power tools, extension cords, etc.
- › 7 Outside pockets to organize small tools or accessories.
- › Padded adjustable shoulder strap.
- › Abrasion resistant rubber feet.
- › Padded carrying handles.
- › Hi-Viz™ webbing with reflective stripe.
- › 24"L x 12"W x 12"H
- › See entire Hi-Viz™ series on page 76.



1111M

**7 Pocket - 24" Mossy Oak® Gear Bag**

- › All-purpose gear bag perfect for camping or tools.
- › 7 Outside pockets to organize small tools or accessories.
- › Padded adjustable shoulder strap.
- › Abrasion resistant rubber feet.
- › Padded carrying handles.
- › 24"L x 12"W x 12"H
- › See entire Sportsman™ series on page 79.



1570

**20 Pocket - 12" Soft-sided Tool Box**

- › 12 Multi-use outside pockets and 8 inside pockets to organize a wide range of tools and accessories.
- › Padded carrying handle and adjustable shoulder strap.
- › 8" x 3" Multi-compartment plastic tray to organize small parts or accessories.
- › Screen mesh zippered pocket for easy view of pocket contents.
- › 12"L x 8½"W x 14"H



1579

**27 Pocket - 20" Open Top Softsided Tool Box**

- › Removable and adjustable partition slides into place to customize tool box to your storage needs.
- › Reinforced internal pocket for utility knife or other tools.
- › Padded adjustable shoulder strap.
- › Wide open main compartment.
- › Sturdy metal handle bar with molded foam grip for easy carrying.
- › 20"L x 11"W x 11"H



1578

**21 Pocket - 14" Open Top Softsided Tool Box**

- › Reinforced internal pocket for utility knife or other tools.
- › Padded adjustable shoulder strap.
- › Sturdy metal handle bar with molded foam grip for easy carrying.
- › 21 Multi-use pockets and 10 webbing loops to organize a wide range of tools and accessories.
- › 14"L x 11"W x 11"H



1589

**43 Pocket - 18" Double Closed Compartments Tool Carrier**

- › Metal bar handle with comfortable foam grip.
- › Features one compartment designed for power tools and another with 34 pockets for hand tools and accessories.
- › 7" x 5½" Multi-compartment plastic tray included, with EZ-out strap pocket.
- › Padded adjustable shoulder strap.
- › Rubber feet for reduced abrasion.
- › 18"L x 8"W x 13"H



1574

**30 Pocket - 13" Open-and-Closed-Top Tool Carrier**

- › Metal bar handle with comfortable foam grip.
- › Versatile design features an open compartment on one side, and a closed zipper compartment on the other.
- › Rubber feet for reduced abrasion on surfaces.
- › Large 4" x 13" open compartment for cordless tools and other accessories.
- › Closed zipper compartment includes 16 open pockets and elastic strap for hex bit storage.
- › 13"L x 7"W x 12"H



1532

**25 Pocket - 18" Softsided Carpenter's Tool Box**

- › 17 Multi-use outside pockets and 8 inside pockets to organize tools and accessories.
- › Padded rubber carrying handle and adjustable shoulder strap.
- › Large interior to carry a wide variety of carpenter's tools.
- › 2 Large side pockets with loops to hold large tools.
- › Mesh zippered pocket for easy view of pocket contents.
- › 18"L x 9"W x 12"H



1572

**33 pocket - 18" Softsided Tool Box**

- › 21 Multi-use outside pockets and 12 inside pockets to organize tools and accessories.
- › Padded rubber carrying handle and adjustable shoulder strap.
- › 8" x 4" Multi-compartment plastic tray to organize small parts or accessories.
- › Large interior to carry a wide variety of tools and accessories.
- › 18"L x 9½"W x 14"H



1539

**58 Pocket - 18" Large Multi-Compartment Tool Carrier**

- › 52 Pockets inside and 6 outside to organize tools and accessories.
- › Large center compartment to carry power tools and accessories and 2 separate outside compartments.
- › Zippered side panels prevent spillage of tools when carrying or storing carrier.
- › Vertical tool pockets keep them in sight for quick access.
- › 18"L x 7"W x 14"H



1537

**33 pocket - 13" Multi-Compartment Tool Carrier**

- › 23 Pockets inside and 10 outside to organize tools and accessories.
- › Zippered side panel prevents spillage of tools when carrying or storing carrier.
- › Vertical pockets keep tools in sight for quick access.
- › Padded web carrying handles and adjustable shoulder strap.
- › 13"L x 7"W x 13"H



1164

**32 Pocket - 24" Megamouth™ Tote Bag**

- › 8 Multi-use pockets inside and 24 outside to organize tools and accessories.
- › Internal metal frame holds bag open for easy access.
- › Large interior to carry power tools, circular saws, hard hats, etc.
- › Padded handles and adjustable shoulder strap.
- › 24"L x 11"W x 12"H



1163

**31 Pocket - 18" Megamouth™ Tote Bag**

- › 13 Multi-use pockets inside and 18 outside organize tools and accessories.
- › Internal metal frame holds bag open for easy access.
- › Large interior to carry power tools, circular saws, hard hats, etc.
- › Padded handles and adjustable shoulder strap.
- › 18"L x 11"W x 12"H



141163

**31 Pocket - 18" Hi-Viz™ Tote Bag**

- › 13 Multi-use pockets inside and 18 outside organize tools and accessories.
- › Internal metal frame holds bag open for easy access.
- › Hi-Viz™ webbing with reflective stripe.
- › Large interior to carry power tools, circular saws, hard hats, etc.
- › Padded handles and adjustable shoulder strap.
- › 18"L x 11"W x 12"H
- › See entire Hi-Viz™ series on page 77.



1163M

**31 Pocket - 18" Mossy Oak® Tote Bag**

- › 13 Multi-use pockets inside and 18 outside organize tools and accessories.
- › Internal metal frame holds bag open for easy access.
- › Large interior to carry tools, or gear.
- › Padded handles and adjustable shoulder strap.
- › 18"L x 11"W x 12"H
- › See entire Sportsman™ series on page 79.





1165

**22 Pocket - 16" BigMouth® Tote Bag**

- › 12 Multi-use pockets inside and 10 outside organize tools and accessories.
- › Opens wide for easy access to bag's contents.
- › Padded web carrying handles and adjustable shoulder strap.
- › Heavy-duty stitching and bar tacking at all stress points.
- › 16"L x 8½"W x 10"H



1165M

**22 Pocket - 16" Mossy Oak® Tote Bag**

- › 12 Multi-use pockets inside and 10 outside organize tools and accessories.
- › Opens wide for easy access to bag's contents.
- › Padded web carrying handles and adjustable shoulder strap.
- › Heavy-duty stitching and bar tacking at all stress points.
- › 16"L x 8½"W x 10"H
- › See entire Sportsman™ series on page 79.



141165

**22 Pocket - 16" Hi-Viz™ Tote Bag**

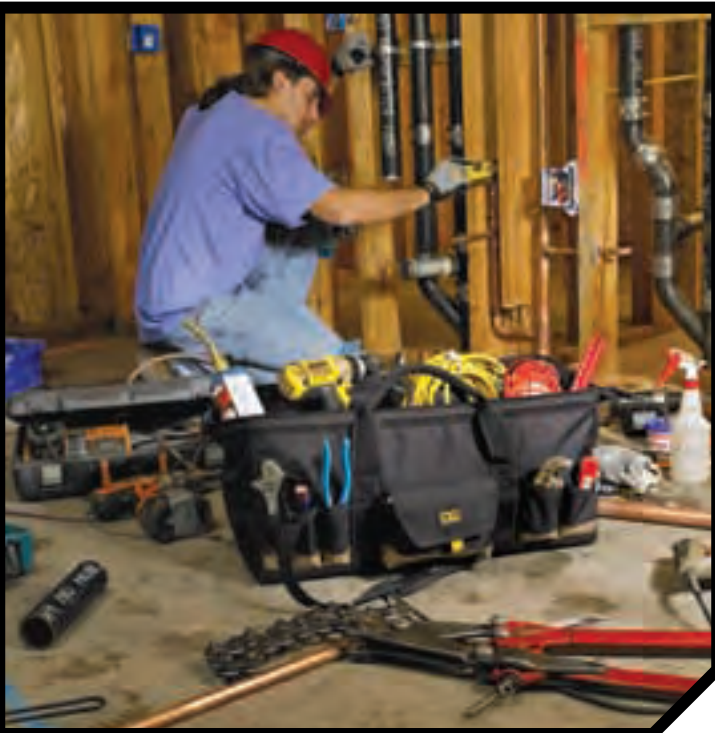
- › 12 Multi-use pockets inside and 10 outside organize tools and accessories.
- › Opens wide for easy access to bag's contents.
- › Hi-Viz™ webbing with reflective stripe.
- › Padded web carrying handles and adjustable shoulder strap.
- › Heavy-duty stitching and bar tacking at all stress points.
- › 16"L x 8½"W x 10"H
- › See entire Hi-Viz™ series on page 77.



1161

**23 Pocket - 12" BigMouth® Tote Bag**

- › 17 Multi-use pockets inside and 6 outside organize tools and accessories.
- › Opens wide for easy access to bag's contents.
- › Padded web carrying handles.
- › Heavy-duty stitching and bar tacking at all stress points.
- › 12"L x 8½"W x 8"H



1161M

**23 Pocket - 12" Mossy Oak® Tote Bag**

- › 17 Multi-use pockets inside and 6 outside organize tools and accessories.
- › Opens wide for easy access to bag's contents.
- › Padded web carrying handles.
- › Heavy-duty stitching and bar tacking at all stress points.
- › 12"L x 8½"W x 8"H
- › See entire Sportsman™ series on page 79.



1136

**38 Pocket - 18" Large BigMouth® Tote Bag**

- › 12 Multi-use pockets inside and 26 outside organize tools and accessories.
- › Reinforced interior bottom panel.
- › Internal metal frame holds bag wide open.
- › Reinforced web carrying handles.
- › 18"L x 8½"W x 10"H



1135

**32 Pocket - 14" BigMouth® Tote Bag**

- › 10 Multi-use pockets inside and 22 outside organize tools and accessories.
- › Reinforced interior bottom panel.
- › Internal metal frame holds bag wide open.
- › Reinforced web carrying handles.
- › 14"L x 8½"W x 10"H



1113

**17 Pocket - 18" Large Tool Tote**

- › 17 Multi-use outside pockets organize tools and accessories.
- › Padded reinforced web carrying handle and adjustable shoulder strap.
- › Will not scratch counter tops, floors or upholstery like metal tool boxes.
- › Heavy-duty stitching and bar tacking at all stress points.
- › 18"L x 7"W x 9"H



1115

**50 Pocket - 18" Large Double-Zipper Tote Bag**

- › 9 Multi-use pockets inside and 41 outside organize tools and accessories.
- › Double-pull zipper for easy access.
- › Padded reinforced web carrying handle.
- › Padded bottom will not scratch, countertops, floors or upholstery like metal tool boxes.
- › 18"L x 6"W x 9"H



1116

**16 Pocket - 14" Standard Tool Tote**

- › 8 Multi-use pockets inside and 8 outside organize tools and accessories.
- › Will not scratch counter tops, floors or upholstery like metal tool boxes.
- › Heavy-duty stitching and bar tacking at all stress points.
- › Zippered top for security.
- › 14"L x 5½"W x 6"H



1126

**32 Pocket - 11" Small Tote Bag**

- › 10 Multi-use pockets inside and 22 outside organize tools and parts.
- › Reinforced web handles.
- › Reinforced bottom panel.
- › Heavy-duty stitching and bar tacking at all stress points.
- › 11"L x 4"W x 8"H



1132

**75 Pocket - Tool Backpack**

- › Made of Cordura® fabric.
- › Enough interior panels to hold a multitude of tools including: 14 pc. wrench sets, electric drills, extension cords, pliers, screwdrivers and much more.
- › 7"x 5" Multi-compartment plastic tray included.
- › Carry it with adjustable padded shoulder straps or handles.
- › 13"W x 17½"H x 9"D



1134

**28 Pocket - Tool Backpack**

- › 24 Inside and 4 outside pockets to organize a wide variety of tools and accessories.
- › Adjustable padded shoulder straps.
- › Large pads on back for extra comfort.
- › Reinforced padded carrying handles.
- › 14"W x 16"H x 6"D



1130

**26 Pocket - Backpack Bag**

- › 20 Inside and 6 outside pockets organize a wide variety of tools and accessories.
- › Padded adjustable shoulder straps.
- › Exclusive Tools-In-A-Row™ system folds open, then open again to layout your most used tools.
- › Reinforced carrying handle.
- › 14"W x 16"H x 4"D



1127

**49 Pocket - 14" Tote-In-A-Bag™**

- › Unique carrier for tools and accessories.
- › Large outside bag features 2 inside pockets, 14 outside pockets with padded carrying handle.
- › Small inside tote features 11 inside pockets, 22 outside pockets with web handles.
- › 14"W x 14"H x 7"D



1167

**30 Pocket - 24" Roller Tote Bag**

- › 23 Multi-use pockets inside and 7 outside organize tools and accessories.
- › Sturdy handle extends for fast transport.
- › Easy-roll wheels on bottom for maneuverability.
- › Large interior to carry power tools, circular saws, hard hats, etc.
- › Padded web handles.
- › 24"L x 11"W x 12"H



1168

**43 Pocket - Sideglide™ Roller Bag**

- › 30 Multi-use pockets inside and 13 outside organize tools and accessories.
- › Sturdy, telescoping handle extends for fast transport on large, easy-roll wheels.
- › 13½" x 9" Multi-compartment plastic tray to organize small parts.
- › Internal metal frame holds bag open for easy access.
- › 17"W x 8½"H x 13"D



51114

**16" Ballistic Nylon Briefcase**

- › Crafted from super tough, double layered 1680D ballistic nylon and top grain leather.
- › Top grain leather carrying handles.
- › Adjustable padded shoulder strap.
- › Padded interior walls to secure and protect laptop.
- › Brief case can also be used as a carry-on bag for traveling.
- › Multi-use pockets provide excellent organization of office supplies, files, and other documents.
- › Easy to reach interior file folder dividers.
- › 16"L x 6"W x 13"H



51112

**22" Ballistic Nylon Duffel Bag**

- › Crafted from super tough, double layered 1680D ballistic nylon and top grain leather.
- › Top grain leather carrying handles.
- › Adjustable padded shoulder strap.
- › Ideal carry on bag when traveling.
- › 22"L x 10"W x 12"H



51115

**Contractor's Business Portfolio**

- › Ballistic nylon with chestnut leather accents.
- › Magnetic clasp.
- › Built-in calculator.
- › Spring clip for 8½" x 11" writing pad.
- › Multiple business card pockets.
- › Pen and document sleeves.



1122

**26 Pocket - 16" Contractor's Brief Bag**

- › Made of polyester fabric.
- › Easy access side pocket for cell phone holder.
- › Multi-use pockets provide excellent organization of small tools and business accessories.
- › Padded handles and adjustable shoulder strap.
- › Large zippered pocket for travel documents.
- › 16"W x 11½"H x 3"D



1107

**2 Utility Bag Combo**

- › Designed for plumbers electrician's, maintenance personnel, paint and general contractors.
- › Reinforced bottom panels.
- › Separate and organize small parts and hand tools.
- › Strong web carry handles.
- › One 12" x 4½" x 5½"
- › One 14" x 5½" x 6"



1148

**22 Pocket - Drawstring Bucket Bag**

- › 6 Large compartments for organizing and stowing small parts.
- › 6 Pockets outside and 10 inside for a variety of tools and accessories.
- › Easy-lock/push button-release drawstring system.
- › "Soft" bottom panel prevents tipping and spilling.
- › 10" Diameter x 7" High



1173

### 32 Pocket - Socket / Tool Roll Pouch

- › Unique socket holder with hook and loop closure holds metric and standard sockets.
- › Heavy-duty elastic strap keeps tools in place.
- › Adjustable quick-release buckle fastens pouch when not in use.
- › Carrying handle for easy transport.
- › 28"W x 14"H



1171

### 20 Pocket - Chisel / Tool Roll Pouch

- › Multi-size pockets in handy double-row design.
- › Reinforced buckle-style strap with hook and loop closure keeps RollPouch™ securely fastened when not in use.
- › Large brass grommets for easy hang-up while working.
- › Organizes tools and chisels in a compact pouch that's easy to roll up and stow.
- › 20"W x 18"H



1211

### 25" Climate Gear Large Duffel Bag

- › Durable interwoven tarpaulin construction.
- › Polyester bottom with rubber strips.
- › Weather resistant zippers.
- › Large external zipper compartment.
- › Large internal compartment with six webbing tool loops.
- › Padded adjustable shoulder strap.
- › 25"L x 14"W x 13"H
- › See *entire Climate Gear™ series on page 69.*



1263

### 18" Climate Gear Tool Bag

- › Durable interwoven tarpaulin construction.
- › Polyester bottom with rubber strips.
- › Weather resistant zippers.
- › Large internal compartment with seven webbing tool loops.
- › Large external zipper compartment.
- › Outer pocket with unique Velcro® system to keep bag shut for transport or open for easy access to tools.
- › Padded anti-slip shoulder strap.
- › 18"L x 10½"W x 10"H
- › See *entire Climate Gear™ series on page 69.*



1258

### 14" Climate Gear Tool Bag

- › Durable interwoven tarpaulin construction.
- › Polyester bottom with rubber strips.
- › Weather resistant zippers.
- › Large internal compartment with six webbing tool loops.
- › Weather resistant zipper.
- › Outer pocket with unique Velcro® system to keep bag shut for transport or open for easy access to tools.
- › Padded anti-slip shoulder strap.
- › 14"L x 9½"W x 10"H
- › See *entire Climate Gear™ series on page 69.*



1213

### 20 Pocket - Climate Gear SoftBucket™ Tool Carrier

- › Durable interwoven tarpaulin construction.
- › Polyester bottom with rubber strips.
- › Unique zippered dome top prevents spilling.
- › Removable metal frame slides into place to customize tool bag to storage needs.
- › Weather resistant zipper.
- › Internal frame and external polyester webbing keeps bag sturdy for easy access.
- › 12" Diameter x 19" High
- › See *entire Climate Gear™ series on page 69.*



1545

**27 Pocket - 17" Tool Tote / Cooler Bag**

- › Large 13"L x 8"W x 12"H tote compartment with wide opening for easy access to bag contents.
- › 4" x 8" x 12" Insulated side cooler compartment holds up to 6 beverage cans.
- › 12 Multi-use pockets inside and 15 outside organize tools and accessories.
- › Durable carry handles and adjustable shoulder strap.
- › 17"L x 8"W x 12"H



1540

**4 Pocket - 15" Cooler Bag**

- › Large interior holds up to 12 beverage cans.
- › Keep food and drinks cool on the job site, at school, in the office, camping, fishing, etc.
- › Quick-grab top hatch for easy access to contents.
- › Durable carry handles and adjustable shoulder strap.
- › 15"L x 7"W x 10"H



4122

**61 Pocket - In & Out Bucket Organizer**

- › Made of durable, rugged, 600D Ripstop fabric.
- › 36 Triple row outside pockets, 25 double row inside pockets to organize a wide range of tools and accessories.
- › Drill holder with side release buckle security strap.
- › Designed to fit most standard 3½- to 5-gallon buckets.



1119

**48 Pocket - Bucket Organizer**

- › 14 Double row pockets inside and 34 triple row outside organize a wide range of tools and accessories.
- › Tape strap and key clip included.
- › Drill pocket with hook and loop handle strap.
- › Designed to fit most standard 3½- to 5-gallon buckets.



1118

**30 Pocket - Outside Bucket Organizer**

- › 30 Multi-size outside pockets organize a wide range of tools and accessories.
- › Drill pocket with hook & loop handle strap.
- › Tape strap & key clip.
- › Security pocket with hook and loop closure.
- › Designed to fit most standard 3½- to 5-gallon buckets.



141119

**48 Pocket - Hi-Viz™ Bucket Organizer**

- › 14 Double row pockets inside and 34 triple row outside organize a wide range of tools and accessories.
- › Tape strap and key clip included.
- › Hi-Viz™ webbing with reflective stripe.
- › Drill pocket with hook and loop handle strap.
- › Designed to fit most standard 3½- to 5-gallon buckets.
- › See entire Hi-Viz™ series on page 76.



1117

**30 Pocket - Bucket Organizer**

- › 14 Multi-size pockets inside and 16 outside to organize a wide range of tools and accessories.
- › Designed to fit most standard 3½- to 5-gallon buckets.
- › Heavy-duty stitching and bartacking at all stress points.



1138

**47 Pocket - SoftBucket™ Tool Carrier**

- › 10 Multi-size pockets inside and 37 outside to organize a wide range of tools and accessories.
- › Key clip and tape holder.
- › Drill pocket with hook and loop handle strap.
- › Reinforced interior bottom panel to hold shape.
- › 10" Diameter x 12" High.



1152

**2½" High, CLC RoundUps® Bucket Tray**

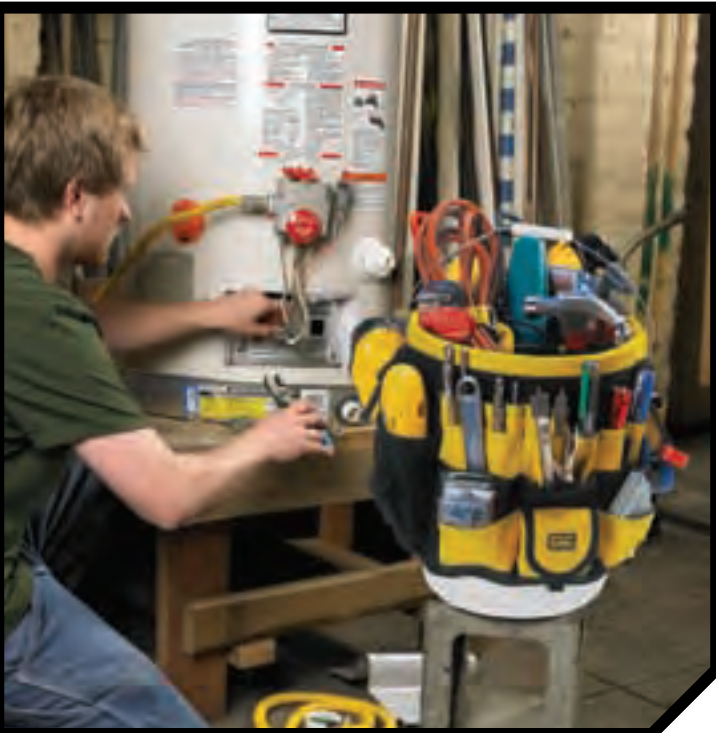
- › Durable lightweight plastic.
- › Unique "pop-up" carrying handle.
- › Stack or nest trays inside a standard 3½- to 5-gallon bucket.



1153

**3" High, CLC RoundUps® Bucket Tray**

- › Durable lightweight plastic.
- › Unique "pop-up" carrying handle.
- › Stack or nest trays inside a standard 3½- to 5-gallon bucket.



1140

**Easyseat® Bucket Lid**

- › Turns standard 3½- to 5-gallon bucket into a comfortable seat.
- › Slotted top design channels away moisture.
- › Durable, lightweight plastic.



# KNEEPADS

We design every kneepad we make with a focus on comfort, protection and function. Our top-of-the-line kneepads offer the ultimate in comfort by using a combination of layered gel and soft foam padding. While the knee cups and strap systems are designed to hold the kneepad in place and make the fit as comfortable and safe as possible. Plus we have kneepads for all applications with caps designed for stability, mobility, or for polished surfaces, softness.





## Professional Ultraflex® Gel Kneepads

Thick, high density closed cell foam for all day comfort.

Ultraflex® cap design for comfort and protection.

“Comfort Zone” gel center provides maximum cushioning for all-day wearability.

Soft, flexible outer shell protects and grips most surfaces without scratching or scuffing.

Adjustable to fit all sizes.

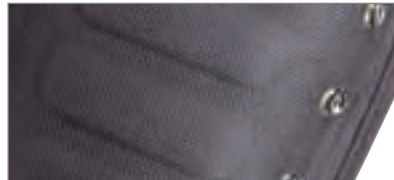
Durable synthetic rubber straps.



### » KEY CATEGORY FEATURES



Polyester fabric is lightweight but durable.



Ballistic poly fabric for increased durability.



Layered gel and foam padding increases comfort for extended wear.



Adjustable straps are easy-on, easy-off.



Double closure system keeps kneepad comfortably in place.



All-terrain caps provide extra protection on rough surfaces.



Slide buckles are easy to secure and adjust.



Recessed stitching increases cap life.



Heavy-duty top grain leather is flexible but strong.



**G350**

**Injected Gel Kneepads with Removable Caps**

- › Removable caps for multiple surface use.
- › Breathable neoprene lower strap with patented double closure system.
- › Injected gel and PU foam for ultimate comfort.
- › Molded interior padding for better fit and protection around the knee.
- › One size fits all.



**G351**

**Foam Gel Kneepads**

- › Foam gel interior padding for superior comfort.
- › Breathable neoprene lower strap with double closure system.
- › Extended large cap distributes pressure while supporting knee.
- › Exclusive cap design for outstanding stability.
- › One size fits all.



**G340**

**Professional Gel Kneepads**

- › “Comfort Zone” gel center provides maximum cushioning for all-day wearability.
- › Crafted from 1680D ballistic polyester throughout.
- › Breathable neoprene lower straps secure below the knee for comfort all day long.
- › Large caps are over-sized for more protective coverage.
- › Two-strap fastening for added stability.
- › Upper elastic strap with slide buckle fasteners for rapid fit.
- › One size fits all.



**14340**

**Professional Hi-Viz™ Gel Kneepads**

- › “Comfort Zone” gel center provides maximum cushioning for all-day wearability.
- › Crafted from 1680D ballistic polyester throughout.
- › Breathable neoprene lower straps secure below the knee for comfort all day long.
- › Large caps are over-sized for more protective coverage.
- › One size fits all.
- › Hi-Viz™ webbing with reflective stripe.
- › See entire Hi-Viz™ series on page 76.



**345**

**Professional Kneepads**

- › Thick ½" high density, closed cell foam for all day comfort.
- › Breathable neoprene lower straps secure below the knee for added comfort.
- › Large caps are over-sized for more protective coverage.
- › Upper elastic strap with slide buckle fasteners for rapid fit.
- › One size fits all.



**347**

**Armadillo™ Kneepads**

- › Full-size, Flex-Channel™ cap engineered with air cushion chambers.
- › Deep side panels for added protection.
- › Dense, closed-cell foam for added comfort.
- › Nylon web and elastic straps with slide buckle connectors.
- › One size fits all.



**G361**

**Professional Ultraflex® Gel Kneepads**

- › “Comfort Zone” gel center provides maximum cushioning for all-day wearability.
- › Soft, flexible outer shell protects and grips most surfaces without scratching or scuffing.
- › Ultraflex® upper cap design for comfort and protection.
- › Slot-n-Dot™ strap connections.
- › Memory-Flex™ synthetic rubber straps.
- › One size fits all.



**361**

**Ultraflex® Non-Skid Kneepads**

- › Ultraflex® upper cap design for comfort and protection.
- › Soft, flexible outer shell protects and grips most surfaces without scratching or scuffing.
- › High density, closed-cell foam for all-day comfort.
- › Slot-n-Dot™ strap connections.
- › Memory-Flex™ synthetic rubber straps.
- › One size fits all.



**360**

**Ultraflex® Swivel Cap Kneepads**

- › Smooth, rigid chemical-resistant outer shell.
- › High density closed cell foam for all-day comfort.
- › Ultraflex® upper cap design for comfort and protection.
- › Slot-n-Dot™ strap connections.
- › Memory-Flex™ synthetic rubber straps.
- › One size fits all.



**339**

**Armor-Flex™ Kneepad**

- › Flexible PVC cap.
- › Dense, laser cut, closed-cell foam for a better fit and added protection.
- › Side-cut cap and pad design for comfort and mobility.
- › Nylon web and elastic straps with slide buckle connectors.
- › One size fits all.



**239**

**Duralite™ Kneepads**

- › Textured EVA foam body is lightweight and comfortable and won't mar surfaces.
- › Injection-molded, Contour-Fit™ kneecups.
- › Vented for breathability.
- › Slot-n-Dot™ strap connections.
- › Memory-Flex™ synthetic rubber straps.
- › One size fits all.



**369**

**Non-Skid Kneepads**

- › Soft, flexible outer shell protects and grips most surfaces without scratching or scuffing.
- › High density, closed-cell foam pad for all-day comfort.
- › Slot-n-Dot™ strap connections.
- › Memory-Flex™ synthetic rubber straps.
- › One size fits all.



V237

#### Swivel Cap Kneepads

- › Exclusive grooved cap design prevents thread abrasion.
- › Slide buckle style fastening system with adjustable straps.
- › Comfortable foam padding for extra knee protection.
- › Tough, lightweight fabric covering.
- › One size fits all.



14237

#### Hi-Viz™ Swivel Cap Kneepads

- › Exclusive grooved cap design prevents thread abrasion.
- › Slide buckle style fastening system with adjustable straps.
- › Comfortable foam padding for extra knee protection.
- › Tough, lightweight fabric covering.
- › One size fits all.
- › Hi-Viz™ webbing with reflective stripe.
- › See entire Hi-Viz™ series on page 76.



V236

#### Non-Skid Swivel Cap Kneepads

- › Exclusive grooved cap design prevents thread abrasion.
- › Slide buckle style fastening system with adjustable straps.
- › Comfortable foam padding for extra knee protection.
- › Tough, lightweight fabric covering.
- › One size fits all.



V234

#### Stitched Non-Skid Kneepads

- › Exclusive grooved cap design prevents thread abrasion.
- › Comfortable foam padding for extra knee protection.
- › Double straps with hook and loop fasteners.
- › Tough, lightweight fabric covering.
- › One size fits all.



V6356

#### Riveted Non-Skid Kneepads

- › Heavy, non-scutting rubber caps for sure grip on all surfaces.
- › Thick foam padding for all-day comfort.
- › Slide buckle style fastening system with adjustable straps for convenience and fit.
- › One size fits all.



V6355

#### Riveted Easy-Swivel Kneepads

- › Heavy-duty construction throughout.
- › Heavy plastic front caps for easy knee swiveling.
- › Thick foam padding for all-day comfort.
- › Slide buckle style fastening system with adjustable straps for convenience and fit.
- › One size fits all.



V230

**Stitched Plastic Cap Kneepads**

- › Exclusive grooved cap design prevents thread abrasion.
- › Super tough, lightweight fabric covering.
- › Comfortable foam padding for extra knee protection.
- › Comfortable, double straps with hook and loop fasteners.
- › One size fits all.



343

**Extra-Length Flooring Kneepad**

- › Ballistic poly cover for durability.
- › Extra length allows more knee / shin contact for greatly increased comfort during periods of extended use.
- › Soft and flexible neoprene liner and strap for all-day wear.
- › One size fits all.



341

**Extreme-Duty Flooring Kneepad**

- › Kevlar® material cover for increased wear and protection against cuts and abrasion.
- › Constructed for added strength, durability and comfort.
- › Soft and flexible neoprene liner and strap for all-day wear.
- › One size fits all.



342

**Heavy-Duty Flooring Kneepads**

- › Heavy-duty construction throughout.
- › Comfortable foam padding for extra protection.
- › Slide buckle style fastening system with adjustable straps for convenience and fit.
- › One size fits all.



V6357

**Flooring Kneepads**

- › Heavy-duty poly fabric construction.
- › One size fits all.
- › Slide buckle style fastening system with adjustable straps for convenience and fit.



V229

**Durable Foam Kneepads**

- › Extra length thick molded foam for comfort and protection.
- › Hook and loop fasteners.
- › Double adjustable elastic straps for a better fit.
- › One size fits all.



**V231**

**Deluxe Foam Kneepads**

- › Molded foam and tricot liner for comfort.
- › Adjustable elastic strap.
- › Hook and loop fasteners.
- › One size fits all.



**V235**

**Ultra-Light Kneepads**

- › Lightweight plastic foam pad.
- › Adjustable elastic straps.
- › Hook and loop fasteners.
- › One size fits all.



**318**

**Professional Heavy-Duty Molded Rubber Kneepads**

- › Flat face and deep cup design for added stability.
- › Thick-cushioned rubber for heavy industrial use.
- › Adjustable leather straps with steel buckles for secure fit.
- › One size fits all.



**V310**

**Molded Rubber Kneepad**

- › Molded rubber for durability.
- › Elastic straps with hook and loop fasteners.
- › Lightweight, yet durable.
- › One size fits all.
- › **310** - Same as above with adjustable web straps and slide buckles.



**319**

**Molded Natural Rubber Kneepads**

- › Flat face design for added stability.
- › One size fits all.
- › Double poly web straps with metal buckle.



**317**

**Molded Natural Rubber Kneepads**

- › Molded rubber for added durability.
- › Flat design for added stability.
- › Adjustable web straps with metal buckle.
- › One size fits all.



313

**Professional Leather Kneepads**

- › Double thickness felt lining for all-day comfort.
- › Top grain leather.
- › Adjustable leather straps with steel buckles.
- › Riveted for extra strength.
- › One size fits all.



309

**Heavy-Duty Leather Kneepads**

- › Designed for comfort, protection and support.
- › ½" Thick water-repellent felt lining.
- › Top grain leather.
- › Riveted for extra strength.
- › Adjustable leather straps with steel buckles.
- › One size fits all.



377

**Armor-Flex™ Leather Kneepads**

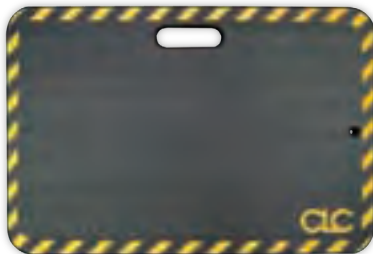
- › Flexible full grain leather cap.
- › Dense, laser cut, closed-cell foam for a better fit and added protection.
- › Side-cut cap and pad design for comfort and mobility.
- › Nylon web and elastic straps with slide buckle connectors.
- › One size fits all.



303

**Large Industrial Kneeling Mat**

- › NBR material will not degrade with oil or petroleum contact.
- › Unique handle location provides more useful kneeling area.
- › Excellent shock absorption and cushioning properties.
- › Silicone free material.
- › Beveled edge design.
- › 28" x 16"
- › 305 - Same as above with extra large dimensions of 36" x 18"



302

**Medium Industrial Kneeling Mat**

- › NBR material will not degrade with oil or petroleum contact.
- › Unique handle location provides more useful kneeling area.
- › Excellent shock absorption and cushioning properties.
- › Silicone free material.
- › 14" x 21"



301

**Small Industrial Kneeling Mat**

- › NBR material will not degrade with oil or petroleum contact.
- › Unique handle location provides more useful kneeling area.
- › Excellent shock absorption and cushioning properties.
- › Silicone free material.
- › 18" x 8"



# CLIMATE GEAR™

When the elements are working against you, we have the gear to help keep you dry. Our rain suits, boots, ponchos, and tarpaulin tool bags are designed and built to stand up to the most severe wet weather conditions. So, when Mother Nature throws you a curve, be prepared with a full set of Climate Gear™ at the ready to help you get the job done.





## 3 Piece Polyester Rain Suit

Constructed with 170T polyester.  
Full cut sizes to fit over clothing.

Drawstring elastic waist pants  
for comfortable fit.

Detachable drawstring hood.

Rear mesh panel for breathability.

Storm front jacket with double fly snap.



### » KEY CATEGORY FEATURES



Bib overall design for added rain protection and a more comfortable fit.



Detachable hood allows jacket to be converted based on preference.



PVC with polyester backing for strength and moisture resistance.



Nylon material is lightweight, durable and dries quickly.



Polyester material is lightweight and durable.



Steel toe boots for added protection.



Double snap storm closure helps resist moisture.



Tarpaulin material is strong, durable, and water resistant.



Climate resistant zippers help keep moisture out.



**R106**

**3 Piece Lightweight PVC Rain Suit**

- › Constructed with lightweight 0.10mm PVC.
- › Rear mesh vents for breath-ability.
- › Detachable drawstring hood.
- › Jacket, elastic waist pants and detachable hood.
- › Full cut sizes to fit over clothing.
- › **SIZES:** M, L, XL, 2XL, 3XL, 4XL



**R110**

**3 Piece Medium-Weight PVC Rain Suit**

- › Constructed with medium-weight 0.20mm PVC.
- › Jacket, bib pants and detachable hood.
- › Detachable drawstring hood.
- › Storm front jacket with double fly snap.
- › Bib style pants with snap fly front and adjustable straps.
- › Full cut sizes to fit over clothing.
- › **SIZES:** M, L, XL, 2XL



**R101**

**3 Piece Heavyweight PVC Rain Suit**

- › Constructed with heavyweight 0.35mm PVC with polyester backing.
- › Jacket, bib pants and detachable hood.
- › Full cut sizes to fit over clothing.
- › Rear mesh vents for breathability.
- › Bib style pants with snap fly front and adjustable straps.
- › Detachable drawstring hood.
- › **SIZES:** M, L, XL, 2XL, 3XL, 4XL



**R131**

**3 Piece Heavyweight PVC Rain Suit**

- › Constructed with heavyweight 0.35mm PVC with polyester backing.
- › Jacket, bib pants and detachable hood.
- › Full cut sizes to fit over clothing.
- › Rear mesh vents for breathability.
- › Bib style pants with snap fly front and adjustable straps.
- › Detachable drawstring hood.
- › **SIZES:** M, L, XL, 2XL, 3XL, 4XL



**R105**

**2 Piece Heavyweight PVC Trench Coat**

- › Constructed with heavyweight 0.35mm PVC with polyester backing.
- › Trench coat and detachable drawstring hood.
- › Storm front coat with double fly snap.
- › Rear mesh vents for breathability.
- › Full cut sizes to fit over clothing.
- › **SIZES:** M, L, XL, 2XL, 3XL, 4XL



**R17**

**Riding Slicker**

- › Constructed with heavyweight 0.35mm PVC with polyester backing.
- › Storm flap with zipper and snap closure.
- › Corduroy collar for comfort.
- › Snap closure around legs.
- › **SIZES:** M/L, X/2X, 3X/4X



**R114**

**2 Piece Heavyweight PVC Rain Jacket**

- › Constructed with heavyweight 0.35mm PVC with polyester backing.
- › Jacket and detachable drawstring hood.
- › Corduroy collar for comfort.
- › Rear mesh vents for breathability.
- › Full cut sizes to fit over clothing.
- › **SIZES:** M, L, XL, 2XL, 3XL



**R102**

**3 Piece Polyester Rain Suit**

- › Constructed with 170T polyester, 0.18mm.
- › Jacket, pants, detachable hood.
- › Full cut sizes to fit over clothing.
- › Rear mesh panel for breathability.
- › Drawstring elastic waist pants for comfortable fit.
- › Storm front jacket with double fly snap.
- › **SIZES:** M, L, XL, 2XL, 3XL, 4XL



**R112**

**Professional Grade Rain Jacket**

- › Constructed with heavy-duty 0.65mm PVC outer material.
- › Heavyweight cotton and polyester lining for strength, comfort and durability.
- › Attached, adjustable hood with visor.
- › Neoprene cuffs for added water and cold resistance.
- › **SIZES:** L, XL, 2XL



**R113**

**Professional Grade Bib Overall**

- › Constructed with heavy-duty 0.65mm PVC outer material.
- › Heavyweight cotton and polyester lining for strength, comfort and durability.
- › Snap closure exterior pocket on the chest area.
- › Hook and loop adjustable waist and cuffs.
- › Reinforced knee for extra durability.
- › Outside pocket with drain hole.
- › **SIZES:** L, XL, 2XL



**R103**

**3 Piece Nylon Rain Suit**

- › Constructed with 190T nylon, 0.18mm.
- › Jacket and detachable drawstring hood.
- › Storm front jacket with zippered closure.
- › Drawstring elastic waist pants.
- › Internal back mesh panel for breathability.
- › Black with gold.
- › Full cut sizes to fit over clothing.
- › **SIZES:** M, L, XL, 2XL, 3XL, 4XL



**R108**

**2 Piece Heavyweight Polyurethane Rain Suit**

- › Constructed with heavyweight 0.40mm polyurethane.
- › Storm front jacket with zippered closure.
- › Vent holes for breathability.
- › Jacket with drawstring hood.
- › Elastic waist pants for comfortable fit.
- › Navy blue.
- › Full-cut sizes to fit over clothing.
- › **SIZES:** L, XL, 2XL



**R107**

**3 Piece Fluorescent Yellow Polyester Rain Suit**

- › Constructed with medium-weight 0.25mm oxford polyester.
- › High visibility material.
- › Jacket, bib pants and detachable hood.
- › Storm front jacket with double fly snap.
- › Heavy-duty buckles on bib overall straps.
- › Rear mesh vents for breathability.
- › Full cut sizes to fit over clothing.
- › Snaps on jacket and pant cuffs for snug fit.
- › **SIZES:** L, XL, 2XL



**R111**

**3 Piece ANSI 3 Polyester Rain Suit**

- › Constructed with medium-weight 0.18mm oxford polyester.
- › ANSI/ISEA 107-2004 Class 3 certified.
- › High visibility fluorescent yellow body material with retro reflective stripes.
- › Jacket, bib pants and detachable hood.
- › Snaps on jacket and pant cuffs for snug fit.
- › Heavy-duty buckles on bib overall straps.
- › **SIZES:** M, L, XL, 2XL, 3XL



**R104**

**Lightweight Poncho**

- › Lightweight 0.10mm PVC body material.
- › Attached hood.
- › Welded seam construction.
- › Large size, 50" x 80".
- › One size fits most
- › **AVAILABE COLORS**
- › R10410 - Yellow
- › R10420 - Green
- › R10430 - Blue
- › R10440 - Red
- › R10450 - Camo



**R11610**

**Emergency Poncho**

- › Attached hood.
- › Waterproof.
- › Transparent.
- › One size fits most.



**R230**

**PVC Boot**

- › Cleated sole for improved traction.
- › Padded sock liner for added comfort.
- › Over-the-sock sizing.
- › **SIZES:** 7 – 15



**R240**

**Steel Toe PVC Boot**

- › Cleated sole for improved traction.
- › Padded sock liner for added comfort.
- › Over-the-sock sizing.
- › **SIZES:** 7 – 15



**R200**

**17" Slush Boot**

- › Black rubber bar tread sole for longer wear and traction.
- › Top strap with buckle for tightening adjustment.
- › Ozone resistant yellow rubber.
- › Fabric lined for easy removal.
- › Over-the-shoe sizing.
- › **SIZES:** 7 – 17



**R210**

**Plain Toe Rubber Boot**

- › Ozone resistant black rubber uppers.
- › Red rubber bar tread sole for longer wear and traction.
- › Fabric lined for easy removal.
- › Steel shank for stability and durability.
- › 100% waterproof
- › Over-the-sock sizing.
- › **SIZES:** 7 – 16



**R220**

**5 Buckle Rubber Boot**

- › Red rubber bar tread sole for longer wear and traction.
- › Ozone resistant black rubber uppers.
- › Steel shank for stability and durability.
- › Fabric lined for easy removal.
- › Over-the-shoe sizing.
- › **SIZES:** 7 – 17





1211

**25" Climate Gear Large Duffel Bag**

- › Durable interwoven tarpaulin construction.
- › Polyester bottom with rubber strips.
- › Large external zipper compartment.
- › Weather resistant zippers.
- › Large internal compartment with six webbing tool loops.
- › Padded adjustable shoulder strap.
- › 25"L x 14"W x 13"H



1213

**20 Pocket - Climate Gear SoftBucket™ Tool Carrier**

- › Durable interwoven tarpaulin construction.
- › Polyester bottom with rubber strips.
- › Removable metal frame slides into storage needs.
- › Unique zippered dome top prevents spilling.
- › Weather resistant zipper.
- › Internal frame and external polyester webbing keeps bag sturdy for easy access.
- › 12" Diameter x 19" High



1263

**18" Climate Gear Tool Bag**

- › Durable interwoven tarpaulin construction.
- › Polyester bottom with rubber strips.
- › Weather resistant zippers.
- › Large internal compartment with seven webbing tool loops.
- › Large external zipper compartment.
- › Outer pocket with unique Velcro® system to keep bag shut for transport or open for easy access to tools.
- › Padded anti-slip shoulder strap.
- › 18"L x 10½"W x 10"H



1258

**14" Climate Gear Tool Bag**

- › Durable interwoven tarpaulin construction.
- › Polyester bottom with rubber strips.
- › Weather resistant zippers.
- › Large internal compartment with six webbing tool loops.
- › External zipper compartment.
- › Outer pocket with unique Velcro® system to keep bag shut for transport or open for easy access to tools.
- › Padded anti-slip shoulder strap.
- › 14"L x 9½"W x 10"H



1206

**12" Climate Gear Large Parts Bag**

- › Durable interwoven tarpaulin construction.
- › Polyester bottom with rubber strip.
- › Weather resistant zipper.
- › Great for organizing hand tools, parts, and fasteners.
- › 12"L x 3"W x 8"H



1205

**9" Climate Gear Small Parts Bag**

- › Durable interwoven tarpaulin construction.
- › Polyester bottom with rubber strip.
- › Weather resistant zipper.
- › Great for organizing parts and fasteners.
- › 9"L x 2"W x 6"H



# HI-VIZ GEAR™

This new line is both functional and stylish. We've taken the bright lime-yellow used on fire engines and incorporated light reflective striping to create a whole new concept in work gear. Add a safety vest and you'll dramatically increase the likelihood of being seen in conditions with limited ambient light. CLC HVG™ helps you be seen, and look cool.





# #141165

## 22 Pocket - 16" Hi-Viz™ Tote Bag

# #SV22

## Class 2 Surveyor's Vest

High visibility, bright lime-yellow webbing.

Bright lime-yellow piping.

100% Polyester.

3M Scotchlite™ silver stripes.

Light reflective elements.

Light reflective striping.

Adjustable shoulder strap.

11 Pockets.

Front zipper closure.

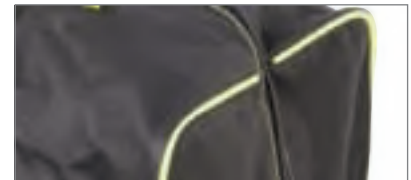
### » KEY CATEGORY FEATURES



High visibility, bright lime-yellow webbing.



Light reflective striping increases possibility of being seen in low ambient light conditions.



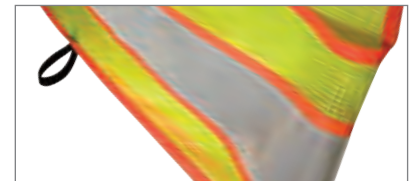
Bright lime-yellow piping helps define edges of bags.



Light reflective elements add to visibility. (low light photo)



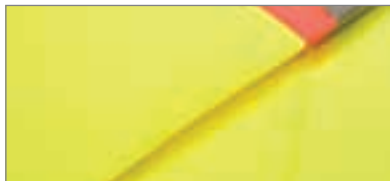
Bright lime-yellow interior makes finding tools and parts easier in low light conditions.



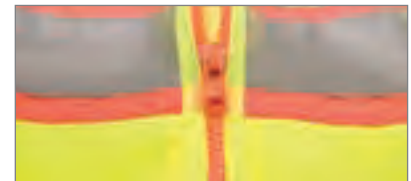
Retro-reflective stripes enhance visibility in low light situations.



Durable polyester mesh is lightweight and cool.



Woven polyester for added strength and durability.



Non-conductive zipper closure.



[HI-VIZ GEAR]™

### Non-ANSI Class

These vests are designed for lower risk working areas where being seen easily is important. These vests are ideal where visibility is helpful and moving vehicles or equipment are not normally present.



SV02

#### Economy Safety Vest - Lime

- › 100% Polyester mesh.
- › Hook and loop closure.
- › Elastic side straps.
- › One Size.



SV03

#### Economy Safety Vest - Orange

- › 100% Polyester mesh.
- › Hook and loop closure.
- › Elastic side straps.
- › One Size.



SV06

#### 1" Striped Safety Vest - Lime

- › 100% Polyester mesh.
- › Hook and loop closure.
- › Elastic side straps.
- › One size.



SV07

#### 1" Striped Safety Vest - Orange

- › 100% Polyester mesh.
- › Hook and loop closure.
- › Elastic side straps.
- › One size.



**SV14**

**Economy Surveyor's Vest - Lime**

- › 100% Polyester.
- › Front zipper closure.
- › 7 Storage pockets.
- › 1" Reflective striping.
- › Non-ANSI rated.
- › **SIZES:** L, XL, 2X, 3X, 4X



**SV15**

**Economy Surveyor's Vest - Orange**

- › 100% Polyester.
- › Front zipper closure.
- › 7 Storage pockets.
- › 1" Reflective striping.
- › Non-ANSI rated.
- › **SIZES:** L, XL, 2X, 3X, 4X

**ANSI Class 3**

This vest is intended to provide the highest level of visibility when workers are in increased danger due to high speed traffic. When body motion should be seen and identified as a person up to 1280 feet away, a Class 3 vest is the correct solution.

**Fire Retardant ANSI Class 2**

This vest meets NFPA 701 and ASTM D6413 Spec and is intended to provide a high level of visibility when workers are in increased danger due to traffic.



**SV26**

**Sleeved Vest Class 3 - Lime**

- › 100% Polyester.
- › 2" 3M Scotchlite™ silver stripes.
- › Front zipper closure.
- › 2 Pockets.
- › **SIZES:** L, XL, 2X, 3X, 4X



**SV34**

**Fire Retardant Vest Class 2 - Lime**

- › Meets ASTM D-6413 FR standard.
- › Front zipper closure.
- › 2" Silver retro-reflective stripes.
- › **SIZES:** L, XL, 2X, 3X, 4X

## ANSI Class 2

These vests are designed to provide greater visibility in poor weather conditions and where backgrounds may be complicated. They are needed where workers may be exposed to traffic and vehicles exceeding 25 MPH.



SV08

### Economy Grade Vest Class 2 - Lime

- › 100% Polyester mesh.
- › 2" Wide retro-reflective stripes.
- › Hook and loop closure.
- › One Size.
- › Elastic side straps.



SV09

### Economy Grade Vest Class 2 - Orange

- › 100% Polyester mesh.
- › 2" Wide retro-reflective stripes.
- › Hook and loop closure.
- › One Size.
- › Elastic side straps.



SV10

### Extra Length Vest Class 2 - Lime

- › 100% Polyester mesh.
- › 2" Wide retro-reflective stripes.
- › Front zipper closure.
- › SIZES: L, XL, 2X, 3X



SV11

### Extra Length Vest Class 2 - Orange

- › 100% Polyester mesh.
- › 2" Wide retro-reflective stripes.
- › Front zipper closure.
- › SIZES: L, XL, 2X, 3X



SV12

**5 Point Breakaway Vest Class 2 - Lime**

- › 100% Polyester mesh.
- › 2" Wide retro-reflective stripes.
- › Hook and loop feature at shoulder, sides and front.
- › **SIZES:** L, XL, 2X, 3X



SV13

**5 Point Breakaway Vest Class 2 - Orange**

- › 100% Polyester mesh.
- › 2" Wide retro-reflective stripes.
- › Hook and loop feature at shoulder, sides and front.
- › **SIZES:** L, XL, 2X, 3X



SV22

**Surveyor's Vest Class 2 - Lime**

- › 100% Polyester.
- › Front zipper closure.
- › 11 Pockets.
- › Mic. hook-up loop.
- › 2" 3M Scotchlite™ silver stripes.
- › **SIZES:** L, XL, 2X, 3X, 4X



SV23

**Surveyor's Vest Class 2 - Orange**

- › 100% Polyester.
- › Front zipper closure.
- › 11 Pockets.
- › Mic. hook-up loop.
- › 2" 3M Scotchlite™ silver stripes.
- › **SIZES:** L, XL, 2X, 3X, 4X



SV28

**Expandable Vest Class 2 - Lime**

- › 100% Polyester.
- › 2" 3M Scotchlite™ silver stripes.
- › Front zipper closure.
- › Interior pocket.
- › **SIZES:** L, XL, 2X, 3X, 4X



SV29

**Expandable Vest Class 2 - Orange**

- › 100% Polyester.
- › 2" 3M Scotchlite™ silver stripes.
- › Front zipper closure.
- › Interior pocket.
- › **SIZES:** L, XL, 2X, 3X, 4X



141604

**17 Pocket - 4 Piece Hi-Viz™ Combo Apron**

- › Made of polyester fabric and ballistic binding.
- › 6 Main nail and tool pockets.
- › 11 Smaller pockets for pliers, nail sets, two way radio, etc.
- › Holder fits tape measures up to 30'.
- › Hi-Viz™ webbing with reflective stripe.
- › 3" Wide padded belt with steel roller buckle.
- › Fits waist sizes 29"- 46".



141833

**10 Pocket Hi-Viz™ Nail & Tool Bag with Poly Web Belt**

- › Made of polyester fabric and ballistic binding.
- › Innovative handle design for easy adjustment and carrying.
- › Gussets keep front pockets wide open for greater access.
- › 4 Main pockets for tools and nails.
- › 6 Smaller pockets for hand tools, pencils, nail sets, etc.
- › Hi-Viz™ webbing with reflective stripe.
- › 2" Poly web belt with quick release buckle
- › Fits waist sizes 29"-46".



141603

**8 Pocket Hi-Viz™ Electrician's Tool Pouch**

- › Made of polyester fabric and ballistic binding.
- › Innovative handle design for easy adjustment and carrying.
- › Multi-use pockets.
- › 2 Large screwdriver holders.
- › Heavy-duty tool snap and electrical tape chain.
- › Metal clip holds all measuring tape sizes.
- › Hi-Viz™ webbing with reflective stripe.



141503

**9 Pocket Hi-Viz™ Electrical & Maintenance Pouch**

- › Made of polyester fabric.
- › Heavy-duty clip on back.
- › Electrical tape sling.
- › Side pockets for screwdrivers.
- › Attach to belt with clip or belt loop.
- › Hi-Viz™ webbing with reflective stripe.



141119

**48 Pocket - Hi-Viz™ Bucket Organizer**

- › 14 Double row pockets inside and 34 triple row outside organize a wide range of tools and accessories.
- › Measuring tape strap and key clip included.
- › Drill pocket with hook and loop handle strap.
- › Designed to fit most standard 3½- to 5-gallon buckets.
- › Hi-Viz™ webbing with reflective stripe.



141111

**7 Pocket - 24" Hi-Viz™ Gear Bag**

- › All-purpose gear bag perfect for carrying air hoses, power tools, extension cords, etc.
- › 7 Outside pockets to organize small tools or accessories.
- › Adjustable shoulder strap.
- › Abrasion resistant rubber feet.
- › Padded carrying handles.
- › Hi-Viz™ webbing with reflective stripe.
- › 24"L x 12"W x 12"H



141163

**31 Pocket - 18" Hi-Viz™ Tote Bag**

- › 12 Multi-use pockets inside and 10 outside organize tools and accessories.
- › Opens wide for easy access to bag's contents.
- › Large interior to carry power tools, circular saws, hard hats, etc.
- › Padded handles and adjustable shoulder strap.
- › Hi-Viz™ webbing with reflective stripe.
- › 18"L x 11"W x 12"H



141165

**22 Pocket - 16" Hi-Viz™ Tote Bag**

- › 12 Multi-use pockets inside and 10 outside organize tools and accessories.
- › Opens wide for easy access to bag's contents.
- › Padded web carrying handles and adjustable shoulder strap.
- › Heavy-duty stitching and bar tacking at all stress points.
- › 16"L x 8½"W x 10"H



14340

**Professional Hi-Viz™ Gel Kneepads**

- › "Comfort Zone" gel center provides maximum cushioning for all-day wearability.
- › Breathable neoprene lower straps secure below the knee for comfort all day long.
- › Upper elastic strap with slide buckle fasteners for rapid fit.
- › Large caps are over-sized for more protective coverage.
- › Crafted from 1680D ballistic polyester throughout.
- › Hi-Viz™ webbing with reflective stripe.
- › One size fits all.



14237

**Hi-Viz™ Swivel Cap Kneepads**

- › Exclusive grooved cap design prevents thread abrasion.
- › Slide buckle style fastening system with adjustable straps.
- › Tough, lightweight fabric covering.
- › Comfortable foam padding for extra knee protection.
- › Hi-Viz™ webbing with reflective stripe.
- › One size fits all.



14110

**Heavy-Duty Hi-Viz™ Work Suspenders**

- › Adjustable to fit all sizes.
- › Elastic rear straps for added comfort.
- › 2" Wide heavy-duty webbing for extra strength.
- › Heavy-duty clips front and rear.



145127

**Large Hi-Viz™ Cell Phone Holster**

- › Versatile 3-way attachment for belts, web suspenders, pants, etc.
- › Holds most brand of large cell phones.
- › Heavy-duty clip on back and padded inside to protect cell phones.
- › Elastic side pockets for pens, pencils, small tools, etc.
- › Hi-Viz™ webbing with reflective stripe.



145124

**Hi-Viz™ Cell Phone Holder**

- › Specially designed to securely hold newer and smaller cell phones.
- › Versatile 2-way attachment for belts, pants, etc.
- › Heavy-duty clip on back, elastic side panels and pad.
- › Hi-Viz™ webbing with reflective stripe.

# SPORTSMAN™

Mossy Oak® Break-Up®



Our CLC Sportsman™ line is a rugged new look. We've taken Mossy Oak's® most popular camo pattern and tailored it to our best-of-class bags and gloves. It's a solid combination that feels right on the jobsite and on the trail.



**ML125**

#### Mossy Oak® Form-Fitted Insulated High Dexterity Work Gloves

- › Synthetic leather palm: tough, soft and comfortable to wear.
- › 3M Thinsulate™ Insulation for warmth without bulk.
- › Stretch spandex back.
- › Padded palm for more comfort.
- › Elastic wrist cuff.
- › **SIZES:** L, XL



**M173**

#### Mossy Oak® Form-Fitted Lined High Dexterity Work Gloves

- › Synthetic leather palm: tough, soft and comfortable to wear.
- › Sure Grip textured palm pads and fingertips for better grip, extra wear and durability.
- › Hipora® PU Membrane liner protects from outside dampness.
- › Wing closing wrist strap for perfect adjustment
- › **SIZES:** M, L, XL



**M125**

#### Mossy Oak® Form-Fitted High Dexterity Work Gloves

- › Synthetic leather palm: tough, soft and comfortable to wear.
- › Stretch spandex back.
- › Padded palm for more comfort.
- › Elastic wrist cuff.
- › **SIZES:** M, L, XL







1111M

**7 Pocket - 24" Mossy Oak® Gear Bag**

- › All-purpose gear bag perfect for camping or tools.
- › 7 Outside pockets to organize small tools or accessories.
- › Padded adjustable shoulder strap.
- › Abrasion resistant rubber feet.
- › Padded carrying handles.
- › 24"L x 12"W x 12"H



1163M

**31 Pocket - 18" Mossy Oak® Tote Bag**

- › 13 Multi-use pockets inside and 18 outside organize tools and accessories.
- › Internal metal frame holds bag open for easy access.
- › Large interior to carry tools or gear.
- › Padded handles and adjustable shoulder strap.
- › 18"L x 11"W x 12"H



1165M

**22 Pocket - 16" Mossy Oak® Tote Bag**

- › 12 Multi-use pockets inside and 10 outside organize tools and accessories.
- › Opens wide for easy access to bag's contents.
- › Padded web carrying handles and adjustable shoulder strap.
- › Heavy-duty stitching and bar tacking at all stress points.
- › 16"L x 8½"W x 10"H



1161M

**23 Pocket - 12" Mossy Oak® Tote Bag**

- › 17 Multi-use pockets inside and 6 outside organize tools and accessories.
- › Opens wide for easy access to bag's contents.
- › Padded web carrying handles.
- › Heavy-duty stitching and bar tacking at all stress points.
- › 12"L x 8½"W x 8"H



1100M

**3 Mossy Oak® Clip-On Zippered Bags**

- › Includes 3 convenient sizes: 9" x 7", 7" x 6" and 6" x 5".
- › Durable clip hangs on tool belts, belt loops, etc.
- › Use for job, fishing, hunting, camping, boating and more.



5124M

**Mossy Oak® Cell Phone Holder**

- › Specially designed to securely hold newer and smaller cell phones.
- › Versatile 2-way attachment for belts, pants, etc.
- › Heavy-duty clip on back, elastic side panels and padded interior to protect cell phones.



## SUSPENDERS & BELTS

Most of the time gravity is working against us. That's why we invented suspenders and belts. Not really, but we've got a great selection, including our tried-and-true back support belts. Take a little bit of the load off with our quality suspenders, soften the ride with our padded work belts, or give yourself some support with our ergonomically designed back belts.



## Elastic Back Support Belt



### » KEY CATEGORY FEATURES



Mesh back helps keep you cool.



Tapered panels increase comfort and movement.



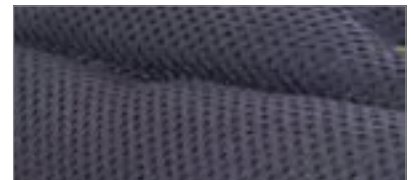
Side bands for added support and adjustability.



One-size-fits-all design is easily adjustable for a tailored fit.



Double tongue roller buckle adds to stability and comfort.



Comfort mesh covered foam stays cool for added comfort.



Top grain leather for durability.



Heavy-duty clips for extra gripping strength.



Elastic rear straps for added comfort.



**5300**

**Top-Of-The-Line Mesh Back Support Belt**

- › 8" Wide breathable Lycra® Spandex power net mesh back panel.
- › Double 4" wide elastic side panels adjustable for custom fit.
- › 1½" Comfortable woven elastic adjustable suspenders.
- › 4 Internal stays keep belt from rolling.
- › Tapered front panels for comfort while bending.
- › **5300S** Fits waist sizes 26" - 33"
- › **5300M** Fits waist sizes 32" - 38"
- › **5300L** Fits waist sizes 37" - 43"
- › **5300XL** Fits waist sizes 41" - 49"



**5000**

**Elastic Back Support Belt**

- › 8" Wide heavy-duty elastic back panel.
- › 5" Wide heavy elastic side bands for custom fit.
- › 1¼" Wide elastic adjustable suspenders.
- › 4 Internal stays provide extra support.
- › Tapered front panels for comfort while bending.
- › **5000S** Fits waist sizes 28" - 32"
- › **5000M** Fits waist sizes 32" - 38"
- › **5000L** Fits waist sizes 38" - 47"
- › **5000XL** Fits waist sizes 46" - 56"



**5400**

**Mesh Back Support Belt**

- › 8" Wide Mesh back panel.
- › 5" Wide elastic bands for proper fit.
- › 1¼" Wide elastic adjustable suspenders.
- › 4 Internal stays keep belt from rolling.
- › **5400S** Fits waist sizes 26" - 33"
- › **5400M** Fits waist sizes 32" - 38"
- › **5400L** Fits waist sizes 37" - 43"
- › **5400XL** Fits waist sizes 41" - 49"





5625

**5" Wide Padded Comfort Belt**

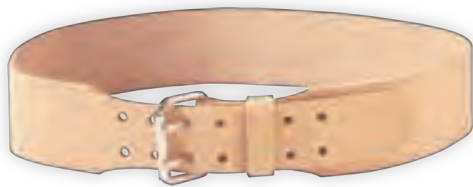
- › Heavy-duty double layer lightweight fabric will not rot, crack, harden or mildew.
- › 2" Double tongue metal roller buckle.
- › Foam padding.
- › Grip-Strip™ fastening system holds pouches securely in place.
- › Fits waist sizes 29"-46".
- › **5625XL** Fits waist sizes 47"- 56"



5623

**3" Wide Padded Comfort Belt**

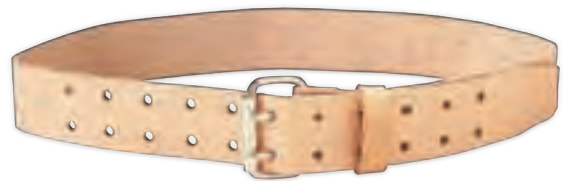
- › Heavy-duty double layer lightweight fabric will not rot, crack, harden or mildew.
- › Foam padding.
- › 2" Double tongue metal roller buckle.
- › Grip-Strip™ fastening system holds pouches securely in place.
- › Fits waist sizes 29"-46".



962

**2 1/4" Tapered Leather Work Belt**

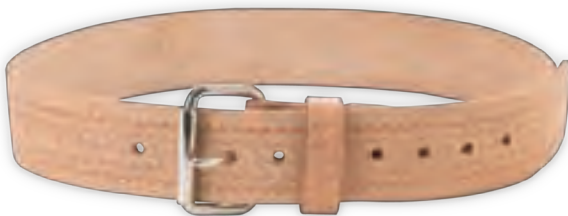
- › Steel double tongue roller buckle.
- › Front cut down design for bending comfort.
- › Top grain leather.
- › **962S** Fits waists 29"- 34"
- › **962M** Fits waists 35"- 40"
- › **962L** Fits waists 41"- 46"



9841

**2" Wide Leather Work Belt**

- › Steel double tongue roller buckle.
- › Top grain leather.
- › Trim to fit waist sizes 29"- 46".



E4521

**2" Embossed Leather Work Belt**

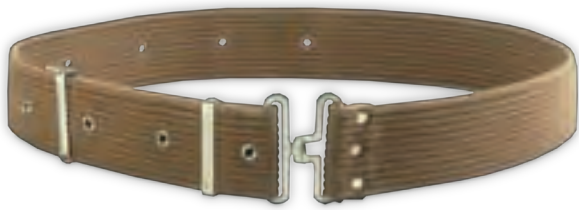
- › Embossed top grain leather.
- › Steel single tongue roller buckle.
- › Trim to fit waist sizes 29"- 46".



E4501

**1 1/4" Embossed Leather Work Belt**

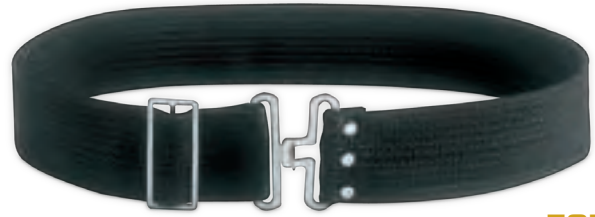
- › Embossed top grain leather.
- › Steel single tongue buckle.
- › Trim to fit waist sizes 29"- 46".



**C501**

**2 1/4" Cotton Web Work Belt**

- › Heavy-duty cotton web.
- › Fits waist sizes 29" - 46".
- › Army pistol-type construction.



**505**

**2 1/4" Poly Web Work Belt**

- › Heavy-duty poly web.
- › Fits waist sizes 29" - 46".
- › Heavy-duty steel buckle.



**3505**

**2" Poly Web Work Belt**

- › Heavy-duty poly web.
- › Fits waist sizes 29" - 46".
- › Quick-release buckle.



**5121**

**Padded Work Suspenders**

- › Adjustable to fit all sizes.
- › Heavy-duty clips front and rear.
- › 2" Wide foam-filled comfort pads.
- › Comfortable heavy-duty straps.



**110RUL**

**Heavy-Duty Tape Rule Elastic Suspenders**

- › Adjustable to fit all sizes.
- › 2" Wide heavy-duty elastic straps.
- › Heavy-duty clips front and rear.
- › Nylon stitched for durability.



**110USA**

**Heavy-Duty USA Flag Elastic Suspenders**

- › Adjustable to fit all sizes.
- › 2" Wide heavy-duty elastic straps.
- › Heavy-duty clips front and rear.
- › Nylon stitched for durability.



**110BLU**

**Heavy-Duty Work Suspenders**

- › Adjustable to fit all sizes.
- › Elastic rear straps for added comfort.
- › 2" Wide heavy-duty webbing for extra strength.
- › Heavy-duty clips front and rear.



**110BLK**

**Heavy-Duty Work Suspenders**

- › Adjustable to fit all sizes.
- › Elastic rear straps for added comfort.
- › 2" Wide heavy-duty webbing for extra strength.
- › Heavy-duty clips front and rear.



**110RED**

**Heavy-Duty Work Suspenders**

- › Adjustable to fit all sizes.
- › Elastic rear straps for added comfort.
- › 2" Wide heavy-duty webbing for extra strength.
- › Heavy-duty clips front and rear.



**14110**

**Heavy-Duty Hi-Viz™ Work Suspenders**

- › Adjustable to fit all sizes.
- › Elastic rear straps for added comfort.
- › 2" Wide heavy-duty webbing for extra strength.
- › Heavy-duty clips front and rear.
- › See entire Hi-Viz™ series on page 76.



**5122**

**Padded Construction Suspenders**

- › Designed to transfer weight from waist to shoulders.
- › Fully adjustable length, front and back to fit all sizes.
- › Convenient quick fastening system.
- › Heavy-duty padding for user comfort.
- › Heavy-duty nylon web for extra strength.



# CANVAS

Sometimes, cotton is the right call. We've got a great mix of quality heavy-duty canvas waist aprons, bib aprons, and tool bags. Plus, take a quick look at our new line of load-rated utility buckets. We've crafted in some of our renowned CLC innovation to give them more utility, and even better value. And, like everything else we do, our canvas gear is built tough.





## Reinforced Mason's Tool Bag

20" x 16" deep bag with reinforced suede leather bottom.

Heavy-duty cotton canvas material with top grain leather handles and straps.

Large 7" x 9" pocket inside.

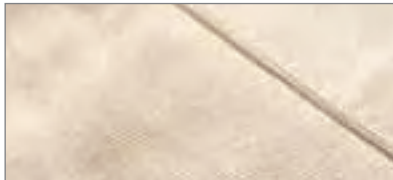
Heavy gauge hinged steel frame opening for tight closure.

Metal tabs on bottom increase abrasion resistance.

Fiberboard bottom shelf retains bag shape.



### » KEY CATEGORY FEATURES



Heavy-duty 100% cotton canvas provides durability.



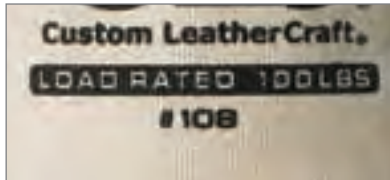
Leather bottom for added strength and durability.



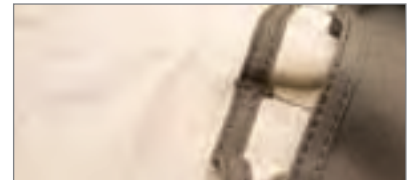
Plastic bottom resists abrasion and moisture.



Back-braided rope bucket handles for strength.



Load rated buckets for added safety.



Tough 10 oz. cotton duck fabric.



Bar tacks at stress points for increased durability.



Covered pockets help secure parts.



Tough polypropylene hammer loops.



210

**14 Pocket Double Row Bib Apron**

- › Super tough 10-ounce cotton duck.
- › 2 Chest pockets for pencils, pens, small tools, etc.
- › 12 Multi-use waist pockets.
- › Waist strap with quick-release buckle.
- › 2 leather hammer loops.



214

**12 Pocket Double Row Waist Apron**

- › Super tough 10-ounce cotton duck.
- › 12 Multi-use waist pockets for nails, screws, tools, etc.
- › Waist strap with quick-release buckle.
- › 2 leather hammer loops.



C10

**12 Pocket Canvas Bib Apron**

- › Heavy-duty cotton canvas.
- › Double rows, 10 waist pockets.
- › 2 Chest pockets for pencils, pens, small tools, etc.
- › Machine washable.
- › One size fits all.
- › 2 Polypropylene hammer loops.



C11

**4 Pocket Loop Neck Bib Apron**

- › Heavy-duty cotton canvas.
- › 2 Large waist pockets.
- › 2 Bib pencil & pad pockets.
- › Machine washable.



C15

**12 Pocket Canvas Waist Apron**

- › Heavy-duty cotton canvas.
- › Double rows, 12 total pockets.
- › Machine washable.
- › 2 Leather hammer loops.
- › One size fits all.



C14

**12 Pocket Canvas Waist Apron**

- › Heavy-duty cotton canvas.
- › Double rows, 12 total pockets.
- › 2 Polypropylene hammer loops.
- › One size fits all.
- › Machine washable.



**C12**

**5 Pocket Canvas Waist Apron**

- › Heavy-duty cotton canvas.
- › Pockets for tools, pencils, parts, etc.
- › 2 Polypropylene hammer loops.
- › One size fits all.
- › Machine washable.



**C6**

**2 Pocket Canvas Work Apron**

- › 2 Large pockets for nails, screws, tools, etc.
- › Canvas waist ties.
- › Double stitched for extra strength.
- › One size fits all.



**914**

**Canvas Nut & Bolt Bag**

- › Heavy-duty canvas duck construction.
- › Large main pocket and 2 tapered drift pin holders.
- › Canvas loop accepts belts up to 4" wide.



**C390**

**Canvas Log Carrier**

- › Heavy-duty canvas duck construction.
- › Suede leather handles.
- › Rivet-reinforced for strength.



**BS60**

**3 Pocket Cotton Work Apron**

- › 2 Bib pad and pencil pockets.
- › Waist pocket for tools, parts, etc.
- › Machine washable.
- › 36" Overall length for added protection.
- › One size fits all.



**TR40**

**Split-Leg Trucker's Loop Neck Apron**

- › Heavy-duty cotton canvas.
- › Pen and pencil pockets above waist.
- › 3 Waist level pockets.
- › Harness straps on each leg.



111

**10" x 56" Canvas Bucket**

- › 150 lb. load rating.
- › Back-braided lifting rope.
- › Side handle mounted mid way to allow for easy guiding and direction.
- › Open top design.
- › Heavy-duty canvas upper and top grain leather base construction.
- › Non-conductive plastic top inner ring.
- › Outside pocket.



108

**10" x 30" Canvas Bucket**

- › Back-braided lifting rope.
- › Drawstring top closure.
- › Handles on top rim for convenient 2 person carrying.
- › 100 lb. load rating.
- › Heavy-duty canvas upper and top grain leather base construction.
- › Non-conductive plastic top inner ring.
- › Outside pocket with hook and loop closing flap.



106

**13" x 22" Canvas Bucket**

- › Back-braided lifting rope.
- › Drawstring top closure.
- › Handles on top rim for convenient 2 person carrying.
- › 100 lb. load rating.
- › Heavy-duty canvas upper and top grain leather base construction.
- › Non-conductive plastic top inner ring.
- › Outside pockets with hook and loop closing flap.



107

**12" Leather Bottom Utility Bucket**

- › Made from heavy-duty canvas material with high strength top ring.
- › Back-braided rope handle through leather reinforced metal grommet.
- › Top grain leather bottom section for strength and durability.
- › 10½" Interior diameter x 16" deep.
- › One inside pocket.



103

#### 12" Plastic Bottom Utility Bucket

- › Made from heavy-duty canvas material with high strength top ring.
- › Back-braided rope handle through leather reinforced metal grommet.
- › Plastic bottom section for strength and durability.
- › 11" Interior diameter x 16" deep.
- › One inside pocket.



105

#### Oval Utility Bucket

- › Made from heavy-duty canvas material with high strength top ring.
- › Plastic bottom section for strength and durability.
- › Back-braided rope handle reinforced with metal eyelets with snap hook.
- › Plastic bottom section for strength and durability.
- › 26 Inside pockets.
- › 15 Outside pockets.
- › 13½" x 6" Interior diameter x 9½" deep.



304X

#### Reinforced Mason's Tool Bag

- › Top grain leather handles and straps.
- › Large 7½" x 9" canvas pocket inside.
- › Heavy gauge hinged steel frame for tight closure.
- › Fiberboard bottom shelf retains bag shape.
- › 20" x 12" deep with suede leather bottom.
- › 300 - 24" x 12" deep with top grain leather bottom



315

#### Economy Canvas Utility Bag

- › All-purpose 20" x 13½" storage bag for a variety of uses.
- › Heavy-duty canvas.
- › Heavy gauge steel frame for tight closure.
- › Suede leather handles and straps.
- › Metal tabs on bottom for durability.

## MERCHANDISERS

We're dedicated to, and focused on, in-store support. We understand our customers and the necessity of making work gear appealing and accessible. We have a number of different displays designed to capture the attention of a busy tradesman or pique the interest of a project-confident DIYer. Take a moment to check out all our hard-working, easy-to-use displays.

### QUARTER PALLET BOXES

- › Attention-getting sales tool for high traffic areas.
- › Shows off large quantities of best selling CLC items.
- › Our biggest point of sale weapon for grabbing impulse shoppers.
- › Attractive full color graphics.
- › Call factory for available styles.



#### CLC Quarter Pallets

› Available in 3 fast moving categories:  
Work Aprons – Kneepads –  
Tool Carriers

› 24"W x 20"D x 29"H



#### Rainwear Quarter Pallet

› Holds up to 81 rain suits.  
› Part #RW03 (Display Only)

› 26"W x 29"D x 58"H



#### CLC Mini Quarter Pallet

› Styles available:  
1533P – 1534P – 1535P

› 21"W x 16"D x 24"H



#### Mossy Oak® Quarter Pallet

› Styles available:  
1111MP – 1105MP –  
1163MP – 1161MP

› 21"W x 16"D x 24"H

## RACK PROGRAMS

- › Sturdy, welded tube steel with heavy gauge wire and peg hooks with scan plates; caster wheels for portability.
- › Attractive full-color graphic side panels and header.
- › Helps preserve valuable wall space.

- › Designed to thrive in high traffic areas.
- › Easily configured for multiple display options.
- › Available in single side, double side and four sided configurations.



**C1091**

› Single Side (Rack Only) 26"W x 15"D x 78"H



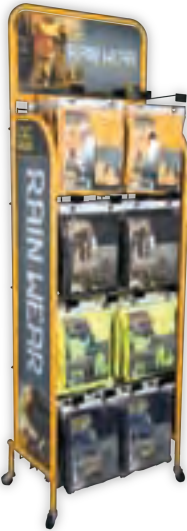
**C1092**

› Double Side (Rack Only) 26"W x 26"D x 78"H



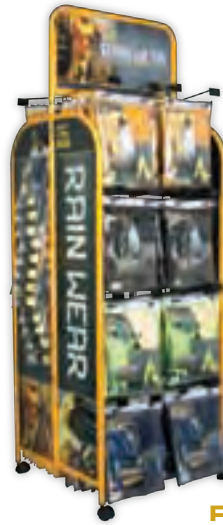
**C1094**

› Four Side (Rack Only) 55"W x 26"D x 78"H



**R1091**

› Single Side (Rack Only) 26"W x 15"D x 78"H



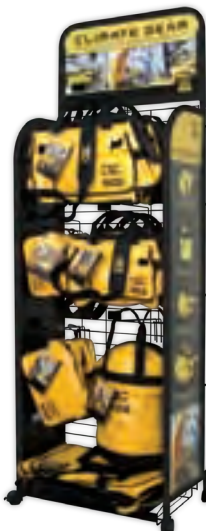
**R1092**

› Double Side (Rack Only) 26"W x 26"D x 78"H



**R1094**

› Four Side (Rack Only) 55"W x 26"D x 78"H



**CG1091**

› Single Side (Rack Only) 26"W x 15"D x 78"H



**M1091**

› Single Side (Rack Only) 26"W x 15"D x 78"H



**M1094**

› Four Side (Rack Only) 55"W x 26"D x 78"H

## CLIP STRIPS

- › Generates impulse sales from otherwise unprofitable spaces.
- › Preloaded for easy set up.
- › Easy way to cross-merchandise.
- › Display your hottest, highest turn items.
- › Features and benefits are highlighted in eye-catching, full color photos.
- › Call factory for available items.



**HV230**



**H361**



**H5023**



**H5124**



**HR104**



**H1514**



**H439**

## COUNTER DISPLAYS



### Compact Keystone™ Display

- › Tower display to merchandise complete assortments of our mobile device holders.
- › Holds merchandise on all 4 sides.
- › Designed for a small, countertop footprint.



### Counter Display

- › Shipping carton doubles as attractive, full color countertop display.
- › Fast moving kneepads assortments.
- › 17"W x 17"D x 19"H (Including header)
- › **Styles available:** G361SP – G340SP – 345SP – G351SP



### PVC Ponchos Counter Display

- › Corrugated cut-case design with integral peg hooks.
- › Holds up to 20 ponchos.
- › Part #RW01 (Display Only)
- › Front panel graphics for easy product reference.
- › 12"W x 9"D x 12"H



### Rain Wear Counter Display

- › Corrugated cut-case design with integral peg hooks.
- › Holds up to 8 suits.
- › Part #RW02 (Display Only)
- › Front panel graphics for easy product reference.
- › 12"W x 9"D x 15"H



## INDEX

SKU#	PAGE#
67	39
69X	25
103	91
105	91
106	90
107	90
108	90
110BLK	85
110BLU	85
110RED	85
110RUL	84
110USA	84
111	90
210	88
214	88
239	57
300	91
301	61
302	61
303	61
304X	91
305	61
309	61
310	60
313	61
315	91
317	60
318	60
319	60
328	39
339	57
341	59
342	59
343	59
345	56
347	56
360	57
361	57
369	57
377	61
407	30
408	30
409	31
415	31
417	39
418	39
424X	24

SKU#	PAGE#
426	38
439	38
441	39
444X	25
449	39
453	39
464	38
465	38
483X	25
500	30
505	84
521	30
526	31
527X	19
539X	35
700	31
739	38
767	39
767P	35
768	39
839	38
902	38
914	89
962 (S - L)	83
970L1	38
1100	34
1100M	79
1102	34
1103	34
1104	34
1105	34
1107	50
1108	36
1111	44
1111M	79
1113	48
1115	48
1116	48
1117	53
1118	52
1119	52
1122	50
1126	48
1127	49
1130	49
1132	49
1134	49

SKU#	PAGE#
1135	48
1136	48
1137	42
1138	53
1139	42
1140	53
1141	43
1148	50
1152	53
1153	53
1161	47
1161M	79
1163	46
1163M	79
1164	46
1165	47
1165M	79
1167	49
1168	49
1171	51
1173	51
1205	69
1206	69
1211	69
1213	69
1245	17
1258	69
1263	69
1370	17
1429	17
1501	29
1503	29
1504	29
1505	29
1509	28
1510	28
1511	37
1514	37
1516	37
1517	37
1518	35
1520	37
1521	37
1523	29
1524	29
1526	42
1527	42

# INDEX

SKU#	PAGE#
1528	42
1529	42
1530	43
1532	45
1533	43
1534	43
1535	43
1537	46
1539	46
1540	52
1545	52
1553	29
1570	44
1572	45
1574	45
1578	45
1579	45
1581	44
1582	44
1589	45
1604	16
1608	16
1614	15
1620	23
1649	17
1714	15
1823	23
2602	14
2605	14
2649	14
2823	22
2833	22
2836	22
3505	84
4071	30
4122	52
5000 (S - XL)	82
5002	35
5003	35
5020	34
5021	34
5023	34
5121	84
5122	85
5123	36
5124	36
5124M	79

SKU#	PAGE#
5125	36
5127	36
5300 (S - XL)	82
5400 (S - XL)	82
5503	28
5505	28
5508	28
5539	35
5604	12
5604XL	12
5605	12
5605XL	12
5608	12
5608XL	12
5609	13
5623	83
5625	83
5625XL	83
5833	22
5836	22
6245	13
6427	13
6439	35
6605	12
6714	15
7041	30
9841	83
11605	12
14110	77
14237	77
14340	77
19427	18
19521	30
21110	6
21425	5
21426	5
21439	6
21448	5
21448XL	5
21449	4
21449XL	4
21450	4
21450XL	4
21452	4
21452XL	4
21683	5
21684	5

SKU#	PAGE#
21960	6
21960XL	6
21961	6
21961XL	6
51112	9
51114	9
51115	9
51425	8
51449	7
51449XL	7
51450	7
51450XL	7
51451	8
51451XL	8
51452	8
51452XL	8
51609	7
51625	9
51625XL	9
51683	8
51714	6
51836	9
51837	9
51923	9
141111	76
141119	76
141163	77
141165	77
141503	76
141603	76
141604	76
141833	76
145124	77
145127	77
174274	18
175274	18
176834	24
178234	24
179334	24
179354	24
BS60	89
C6	89
C10	88
C11	88
C12	89
C14	88
C15	88

## INDEX

SKU#	PAGE#
C390	89
C501	84
DRL91	38
E4501	83
E4521	83
G340	56
G350	56
G351	56
G361	57
I370X3	19
I427X	19
I823X	25
I923X	25
I933	23
IP489X	25
K485R1	31
K500	30
M125 (M - XL)	78
M173 (M - XL)	78
ML125 (L - XL)	78
PK1836	23
R17 (M - 4X)	65
R101 (M - 4X)	64
R102 (M - 4X)	65
R103 (M - 4X)	66
R105 (M - 4X)	65
R106 (M - 4X)	64

SKU#	PAGE#
R107 (L - 2X)	67
R108 (L - 2X)	66
R110 (M - 2X)	64
R111 (L - 3X)	67
R112 (L - 2X)	66
R113 (L - 2X)	66
R114 (M - 3X)	65
R131 (M - 4X)	64
R200 (7 - 17)	68
R210 (7 - 16)	68
R220 (7 - 17)	68
R230 (7 - 15)	68
R240 (7 - 15)	68
R10410	67
R10420	67
R10430	67
R10440	67
R10450	67
R11610	67
SV02	72
SV03	72
SV06	72
SV07	72
SV08	74
SV09	74
SV10 (L - 3X)	74
SV11 (L - 3X)	74

SKU#	PAGE#
SV12 (L - 3X)	75
SV13 (L - 3X)	75
SV14 (L - 4X)	73
SV15 (L - 4X)	73
SV22 (L - 4X)	75
SV23 (L - 4X)	75
SV26 (L - 4X)	73
SV28 (L - 4X)	75
SV29 (L - 4X)	75
SV34 (L - 4X)	73
TR40	89
V229	59
V230	59
V231	60
V234	58
V235	60
V236	58
V237	58
V310	60
V6355	58
V6356	58
V6357	59
W438	31
W500	30
W603	31

### NOTES:



[www.goclc.com](http://www.goclc.com)



©2010 Custom LeatherCraft Mfg. Co., Inc.  
South Gate, CA 90280

P. 800.325.0455 323.752.2221 F. 323.752.9429

Tools shown not included.  
Product descriptions and specifications  
herein may change without notice.

Part# C3022

